

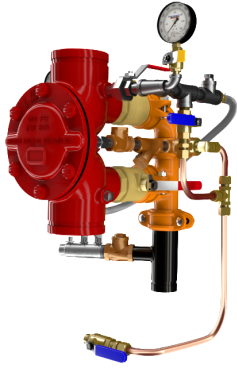
**DDV DIAPHRAGM
 DELUGE
 ELECTRIC TRIM**

- See Bulletins 551
- DDV Electric-Uses 175 PSI Solenoid Valve

Description	Part Number	Short Code	List Price
MODEL DDV DELUGE VALVES FULLY ASSEMBLED - ELECTRIC TRIM			
1-1/2" Groove/Groove (ANSI/AWWA C606)	6507002000	6507002XY0	\$ 6,480.00
1-1/2" Flange/Flange Class 150 (ASME B16.5)	6507102000		\$ 6,480.00
1-1/2" Flange/Flange Class 300 (ASME B16.5)	6507202000		\$ 6,480.00
1-1/2" Flange/Flange PN16 (ISO 7005-2)	6507302000		\$ 6,480.00
1-1/2" NPT Thread/Thread (ANSI/ASME B1.20.1)	6507502000		\$ 6,480.00
1-1/2" ISO7-1 Thread/Thread	6507602000		\$ 6,480.00
2" Groove/Groove (ANSI/AWWA C606)	6507022000		\$ 6,480.00
2" Flange/Flange Class 150 (ASME B16.5)	6507122000		\$ 6,480.00
2" Flange/Flange Class 300 (ASME B16.5)	6507222000		\$ 6,480.00
2" Flange/Flange PN16 (ISO 7005-2)	6507322000		\$ 6,480.00
2" NPT Thread/Thread (ANSI/ASME B1.20.1)	6507522000		\$ 6,480.00
2" ISO7-1 Thread/Thread	6507622000		\$ 6,480.00
2-1/2" Groove/Groove (ANSI/AWWA C606)	6507012000		\$ 7,560.00
2-1/2" Flange/Flange Class 150 (ASME B16.5)	6507112000		\$ 7,560.00
2-1/2" Flange/Flange Class 300 (ASME B16.5)	6507212000		\$ 7,560.00
2-1/2" Flange/Flange PN16 (ISO 7005-2)	6507312000		\$ 7,560.00
2-1/2" NPT Thread/Thread (ANSI/ASME B1.20.1)	6507512000		\$ 7,560.00
2-1/2" ISO7-1 Thread/Thread	6507612000		\$ 7,560.00
76MM Groove/Groove (ANSI/AWWA C606)	6507072000		\$ 7,560.00
3" Groove/Groove (ANSI/AWWA C606)	6507032000		\$ 7,560.00
3" Flange/Flange Class 150 (ASME B16.5)	6507132000		\$ 7,560.00
3" Flange/Flange Class 300 (ASME B16.5)	6507232000		\$ 7,560.00
3" Flange/Flange PN16 (ISO 7005-2)	6507332000		\$ 7,560.00
3" NPT Thread/Thread (ANSI/ASME B1.20.1)	6507532000		\$ 7,560.00
3" ISO7-1 Thread/Thread	6507632000		\$ 7,560.00
4" Groove/Groove (ANSI/AWWA C606)	6507042000		\$ 9,180.00
4" Flange/Flange Class 150 (ASME B16.5)	6507142000		\$ 9,180.00
4" Flange/Flange Class 300 (ASME B16.5)	6507242000		\$ 9,180.00
4" Flange/Flange PN16 (ISO 7005-2)	6507342000		\$ 9,180.00
6" Groove/Groove (ANSI/AWWA C606)	6507062000		\$ 11,880.00
6" Flange/Flange Class 150 (ASME B16.5)	6507162000		\$ 11,880.00
6" Flange/Flange Class 300 (ASME B16.5)	6507262000		\$ 11,880.00
6" Flange/Flange PN16 (ISO 7005-2)	6507362000		\$ 11,880.00
165MM Groove/Groove (ANSI/AWWA C606)	6507052000		\$ 11,880.00

Notes:

Base trim does not include drain trim, alarm test line, or control valve. Please see the last page of the DDV section for optional trim components.



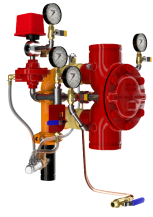
**DDV DIAPHRAGM
 DELUGE WET
 PILOT LINE**

- See Bulletin 551

Description	Part Number	Short Code	List Price
MODEL DDV DELUGE VALVES FULLY ASSEMBLED - WET PILOT TRIM			
1-1/2" Groove/Groove (ANSI/AWWA C606)	650700000		\$5,400.00
1-1/2" Flange/Flange Class 150 (ASME B16.5)	650710000		\$5,400.00
1-1/2" Flange/Flange Class 300 (ASME B16.5)	650720000		\$5,400.00
1-1/2" Flange/Flange PN16 (ISO 7005-2)	650730000		\$5,400.00
1-1/2" NPT Thread/Thread (ANSI/ASME B1.20.1)	650750000		\$5,400.00
1-1/2" ISO7-1 Thread/Thread	650760000		\$5,400.00
2" Groove/Groove (ANSI/AWWA C606)	650702000		\$5,400.00
2" Flange/Flange Class 150 (ASME B16.5)	650712000		\$5,400.00
2" Flange/Flange Class 300 (ASME B16.5)	650722000		\$5,400.00
2" Flange/Flange PN16 (ISO 7005-2)	650732000		\$5,400.00
2" NPT Thread/Thread (ANSI/ASME B1.20.1)	650752000		\$5,400.00
2" ISO7-1 Thread/Thread	650762000		\$5,400.00
2-1/2" Groove/Groove (ANSI/AWWA C606)	650701000		\$5,940.00
2-1/2" Flange/Flange Class 150 (ASME B16.5)	650711000		\$5,940.00
2-1/2" Flange/Flange Class 300 (ASME B16.5)	650721000		\$5,940.00
2-1/2" Flange/Flange PN16 (ISO 7005-2)	650731000		\$5,940.00
2-1/2" NPT Thread/Thread (ANSI/ASME B1.20.1)	650751000		\$5,940.00
2-1/2" ISO7-1 Thread/Thread	650761000		\$5,940.00
76MM Groove/Groove (ANSI/AWWA C606)	650707000		\$5,940.00
3" Groove/Groove (ANSI/AWWA C606)	650703000		\$5,940.00
3" Flange/Flange Class 150 (ASME B16.5)	650713000		\$5,940.00
3" Flange/Flange Class 300 (ASME B16.5)	650723000		\$5,940.00
3" Flange/Flange PN16 (ISO 7005-2)	650733000		\$5,940.00
3" NPT Thread/Thread (ANSI/ASME B1.20.1)	650753000		\$5,940.00
3" ISO7-1 Thread/Thread	650763000		\$5,940.00
4" Groove/Groove (ANSI/AWWA C606)	650704000		\$7,020.00
4" Flange/Flange Class 150 (ASME B16.5)	650714000		\$7,020.00
4" Flange/Flange Class 300 (ASME B16.5)	650724000		\$7,020.00
4" Flange/Flange PN16 (ISO 7005-2)	650734000		\$7,020.00
6" Groove/Groove (ANSI/AWWA C606)	650706000		\$8,640.00
6" Flange/Flange Class 150 (ASME B16.5)	650716000		\$8,640.00
6" Flange/Flange Class 300 (ASME B16.5)	650726000		\$8,640.00
6" Flange/Flange PN16 (ISO 7005-2)	650736000		\$8,640.00
165MM Groove/Groove (ANSI/AWWA C606)	650705000		\$8,640.00

Notes:

Base trim does not include drain trim, alarm test line, or control valve. Please see the last page of the DDV section for optional trim components.



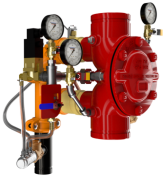
**DDV DIAPHRAGM
 DELUGE DRY
 PILOT LINE**

- See Bulletin 551

Description	Part Number	Short Code	List Price
MODEL DDV DELUGE VALVES FULLY ASSEMBLED - DRY PILOT TRIM			
1-1/2" Groove/Groove (ANSI/AWWA C606)	6507001000		\$ 8,640.00
1-1/2" Flange/Flange Class 150 (ASME B16.5)	6507101000		\$ 8,640.00
1-1/2" Flange/Flange Class 300 (ASME B16.5)	6507201000		\$ 8,640.00
1-1/2" Flange/Flange PN16 (ISO 7005-2)	6507301000		\$ 8,640.00
1-1/2" NPT Thread/Thread (ANSI/ASME B1.20.1)	6507501000		\$ 8,640.00
1-1/2" ISO7-1 Thread/Thread	6507601000		\$ 8,640.00
2" Groove/Groove (ANSI/AWWA C606)	6507021000		\$ 8,640.00
2" Flange/Flange Class 150 (ASME B16.5)	6507121000		\$ 8,640.00
2" Flange/Flange Class 300 (ASME B16.5)	6507221000		\$ 8,640.00
2" Flange/Flange PN16 (ISO 7005-2)	6507321000		\$ 8,640.00
2" NPT Thread/Thread (ANSI/ASME B1.20.1)	6507521000		\$ 8,640.00
2" ISO7-1 Thread/Thread	6507621000		\$ 8,640.00
2-1/2" Groove/Groove (ANSI/AWWA C606)	6507011000		\$ 10,260.00
2-1/2" Flange/Flange Class 150 (ASME B16.5)	6507111000		\$ 10,260.00
2-1/2" Flange/Flange Class 300 (ASME B16.5)	6507211000		\$ 10,260.00
2-1/2" Flange/Flange PN16 (ISO 7005-2)	6507311000		\$ 10,260.00
2-1/2" NPT Thread/Thread (ANSI/ASME B1.20.1)	6507511000		\$ 10,260.00
2-1/2" ISO7-1 Thread/Thread	6507611000		\$ 10,260.00
76MM Groove/Groove (ANSI/AWWA C606)	6507071000		\$ 10,260.00
3" Groove/Groove (ANSI/AWWA C606)	6507031000		\$ 10,260.00
3" Flange/Flange Class 150 (ASME B16.5)	6507131000		\$ 10,260.00
3" Flange/Flange Class 300 (ASME B16.5)	6507231000		\$ 10,260.00
3" Flange/Flange PN16 (ISO 7005-2)	6507331000		\$ 10,260.00
3" NPT Thread/Thread (ANSI/ASME B1.20.1)	6507531000		\$ 10,260.00
3" ISO7-1 Thread/Thread	6507631000		\$ 10,260.00
4" Groove/Groove (ANSI/AWWA C606)	6507041000		\$ 11,880.00
4" Flange/Flange Class 150 (ASME B16.5)	6507141000		\$ 11,880.00
4" Flange/Flange Class 300 (ASME B16.5)	6507241000		\$ 11,880.00
4" Flange/Flange PN16 (ISO 7005-2)	6507341000		\$ 11,880.00
6" Groove/Groove (ANSI/AWWA C606)	6507061000		\$ 14,040.00
6" Flange/Flange Class 150 (ASME B16.5)	6507161000		\$ 14,040.00
6" Flange/Flange Class 300 (ASME B16.5)	6507261000		\$ 14,040.00
6" Flange/Flange PN16 (ISO 7005-2)	6507361000		\$ 14,040.00
165MM Groove/Groove (ANSI/AWWA C606)	6507051000		\$ 14,040.00

Notes:

Base trim does not include drain trim, alarm test line, or control valve. Please see the last page of the DDV section for optional trim components.



DDV DIAPHRAGM DELUGE REMOTE RESET

- See Bulletin 550

Description	Part Number	Short Code	List Price
MODEL DDV DELUGE VALVE - REMOTE RESET			
1-1/2" Groove/Groove (ANSI/AWWA C606)	6507003000		\$ 8,640.00
1-1/2" Flange/Flange Class 150 (ASME B16.5)	6507103000		\$ 8,640.00
1-1/2" Flange/Flange Class 300 (ASME B16.5)	6507203000		\$ 8,640.00
1-1/2" Flange/Flange PN16 (ISO 7005-2)	6507303000		\$ 8,640.00
1-1/2" NPT Thread/Thread (ANSI/ASME B1.20.1)	6507503000		\$ 8,640.00
1-1/2" ISO7-1 Thread/Thread	6507603000		\$ 8,640.00
2" Groove/Groove (ANSI/AWWA C606)	6507023000		\$ 8,640.00
2" Flange/Flange Class 150 (ASME B16.5)	6507123000		\$ 8,640.00
2" Flange/Flange Class 300 (ASME B16.5)	6507223000		\$ 8,640.00
2" Flange/Flange PN16 (ISO 7005-2)	6507323000		\$ 8,640.00
2" NPT Thread/Thread (ANSI/ASME B1.20.1)	6507523000		\$ 8,640.00
2" ISO7-1 Thread/Thread	6507623000		\$ 8,640.00
2-1/2" Groove/Groove (ANSI/AWWA C606)	6507013000		\$ 10,800.00
2-1/2" Flange/Flange Class 150 (ASME B16.5)	6507113000		\$ 10,800.00
2-1/2" Flange/Flange Class 300 (ASME B16.5)	6507213000		\$ 10,800.00
2-1/2" Flange/Flange PN16 (ISO 7005-2)	6507313000		\$ 10,800.00
2-1/2" NPT Thread/Thread (ANSI/ASME B1.20.1)	6507513000		\$ 10,800.00
2-1/2" ISO7-1 Thread/Thread	6507613000		\$ 10,800.00
76MM Groove/Groove (ANSI/AWWA C606)	6507073000		\$ 10,800.00
3" Groove/Groove (ANSI/AWWA C606)	6507033000		\$ 10,800.00
3" Flange/Flange Class 150 (ASME B16.5)	6507133000		\$ 10,800.00
3" Flange/Flange Class 300 (ASME B16.5)	6507233000		\$ 10,800.00
3" Flange/Flange PN16 (ISO 7005-2)	6507333000		\$ 10,800.00
3" NPT Thread/Thread (ANSI/ASME B1.20.1)	6507533000		\$ 10,800.00
3" ISO7-1 Thread/Thread	6507633000		\$ 10,800.00
4" Groove/Groove (ANSI/AWWA C606)	6507043000		\$ 11,880.00
4" Flange/Flange Class 150 (ASME B16.5)	6507143000		\$ 11,880.00
4" Flange/Flange Class 300 (ASME B16.5)	6507243000		\$ 11,880.00
4" Flange/Flange PN16 (ISO 7005-2)	6507343000		\$ 11,880.00
6" Groove/Groove (ANSI/AWWA C606)	6507063000		\$ 14,040.00
6" Flange/Flange Class 150 (ASME B16.5)	6507163000		\$ 14,040.00
6" Flange/Flange Class 300 (ASME B16.5)	6507263000		\$ 14,040.00
6" Flange/Flange PN16 (ISO 7005-2)	6507363000		\$ 14,040.00
165MM Groove/Groove (ANSI/AWWA C606)	6507053000		\$ 14,040.00

Notes:

Base trim does not include drain trim, alarm test line, or control valve. Please see the last page of the DDV section for optional trim components.



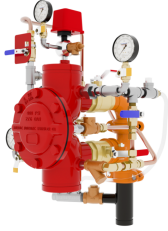
**DDV DIAPHRAGM
 DELUGE REMOTE
 RESET PRESSURE
 REGULATING**

- See Bulletin 550

Description	Part Number	Short Code	List Price
MODEL DDV DELUGE VALVE - REMOTE RESET PRESSURE REGULATING			
1-1/2" Groove/Groove (ANSI/AWWA C606)	6507007000		\$ 11,880.00
1-1/2" Flange/Flange Class 150 (ASME B16.5)	6507107000		\$ 11,880.00
1-1/2" Flange/Flange Class 300 (ASME B16.5)	6507207000		\$ 11,880.00
1-1/2" Flange/Flange PN16 (ISO 7005-2)	6507307000		\$ 11,880.00
1-1/2" NPT Thread/Thread (ANSI/ASME B1.20.1)	6507507000		\$ 11,880.00
1-1/2" ISO7-1 Thread/Thread	6507607000		\$ 11,880.00
2" Groove/Groove (ANSI/AWWA C606)	6507027000		\$ 11,880.00
2" Flange/Flange Class 150 (ASME B16.5)	6507127000		\$ 11,880.00
2" Flange/Flange Class 300 (ASME B16.5)	6507227000		\$ 11,880.00
2" Flange/Flange PN16 (ISO 7005-2)	6507327000		\$ 11,880.00
2" NPT Thread/Thread (ANSI/ASME B1.20.1)	6507527000		\$ 11,880.00
2" ISO7-1 Thread/Thread	6507627000		\$ 11,880.00
2-1/2" Groove/Groove (ANSI/AWWA C606)	6507017000		\$ 12,960.00
2-1/2" Flange/Flange Class 150 (ASME B16.5)	6507117000		\$ 12,960.00
2-1/2" Flange/Flange Class 300 (ASME B16.5)	6507217000		\$ 12,960.00
2-1/2" Flange/Flange PN16 (ISO 7005-2)	6507317000		\$ 12,960.00
2-1/2" NPT Thread/Thread (ANSI/ASME B1.20.1)	6507517000		\$ 12,960.00
2-1/2" ISO7-1 Thread/Thread	6507617000		\$ 12,960.00
76MM Groove/Groove (ANSI/AWWA C606)	6507077000		\$ 12,960.00
3" Groove/Groove (ANSI/AWWA C606)	6507037000		\$ 12,960.00
3" Flange/Flange Class 150 (ASME B16.5)	6507137000		\$ 12,960.00
3" Flange/Flange Class 300 (ASME B16.5)	6507237000		\$ 12,960.00
3" Flange/Flange PN16 (ISO 7005-2)	6507337000		\$ 12,960.00
3" NPT Thread/Thread (ANSI/ASME B1.20.1)	6507537000		\$ 12,960.00
3" ISO7-1 Thread/Thread	6507637000		\$ 12,960.00
4" Groove/Groove (ANSI/AWWA C606)	6507047000		\$ 14,040.00
4" Flange/Flange Class 150 (ASME B16.5)	6507147000		\$ 14,040.00
4" Flange/Flange Class 300 (ASME B16.5)	6507247000		\$ 14,040.00
4" Flange/Flange PN16 (ISO 7005-2)	6507347000		\$ 14,040.00
6" Groove/Groove (ANSI/AWWA C606)	6507067000		\$ 16,200.00
6" Flange/Flange Class 150 (ASME B16.5)	6507167000		\$ 16,200.00
6" Flange/Flange Class 300 (ASME B16.5)	6507267000		\$ 16,200.00
6" Flange/Flange PN16 (ISO 7005-2)	6507367000		\$ 16,200.00
165MM Groove/Groove (ANSI/AWWA C606)	6507057000		\$ 16,200.00

Notes:

Base trim does not include drain trim, alarm test line, or control valve. Please see the last page of the DDV section for optional trim components.



**DDV DIAPHRAGM
 DELUGE DRY
 PILOT PRESSURE
 REGULATING**

- See Bulletin 550
- Dry Pilot Pressure Regulating

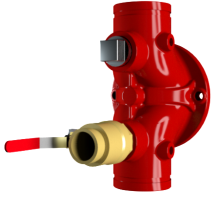
Description	Part Number	Short Code	List Price
MODEL DDV DELUGE VALVE - DRY PILOT PRESSURE REGULATING			
1-1/2" Groove/Groove (ANSI/AWWA C606)	6507005000		\$ 10,800.00
1-1/2" Flange/Flange Class 150 (ASME B16.5)	6507105000		\$ 10,800.00
1-1/2" Flange/Flange Class 300 (ASME B16.5)	6507205000		\$ 10,800.00
1-1/2" Flange/Flange PN16 (ISO 7005-2)	6507305000		\$ 10,800.00
1-1/2" NPT Thread/Thread (ANSI/ASME B1.20.1)	6507505000		\$ 10,800.00
1-1/2" ISO7-1 Thread/Thread	6507605000		\$ 10,800.00
2" Groove/Groove (ANSI/AWWA C606)	6507025000		\$ 10,800.00
2" Flange/Flange Class 150 (ASME B16.5)	6507125000		\$ 10,800.00
2" Flange/Flange Class 300 (ASME B16.5)	6507225000		\$ 10,800.00
2" Flange/Flange PN16 (ISO 7005-2)	6507325000		\$ 10,800.00
2" NPT Thread/Thread (ANSI/ASME B1.20.1)	6507525000		\$ 10,800.00
2" ISO7-1 Thread/Thread	6507625000		\$ 10,800.00
2-1/2" Groove/Groove (ANSI/AWWA C606)	6507015000		\$ 12,420.00
2-1/2" Flange/Flange Class 150 (ASME B16.5)	6507115000		\$ 12,420.00
2-1/2" Flange/Flange Class 300 (ASME B16.5)	6507215000		\$ 12,420.00
2-1/2" Flange/Flange PN16 (ISO 7005-2)	6507315000		\$ 12,420.00
2-1/2" NPT Thread/Thread (ANSI/ASME B1.20.1)	6507515000		\$ 12,420.00
2-1/2" ISO7-1 Thread/Thread	6507615000		\$ 12,420.00
76MM Groove/Groove (ANSI/AWWA C606)	6507075000		\$ 12,420.00
3" Groove/Groove (ANSI/AWWA C606)	6507035000		\$ 12,420.00
3" Flange/Flange Class 150 (ASME B16.5)	6507135000		\$ 12,420.00
3" Flange/Flange Class 300 (ASME B16.5)	6507235000		\$ 12,420.00
3" Flange/Flange PN16 (ISO 7005-2)	6507335000		\$ 12,420.00
3" NPT Thread/Thread (ANSI/ASME B1.20.1)	6507535000		\$ 12,420.00
3" ISO7-1 Thread/Thread	6507635000		\$ 12,420.00
4" Groove/Groove (ANSI/AWWA C606)	6507045000		\$ 14,040.00
4" Flange/Flange Class 150 (ASME B16.5)	6507145000		\$ 14,040.00
4" Flange/Flange Class 300 (ASME B16.5)	6507245000		\$ 14,040.00
4" Flange/Flange PN16 (ISO 7005-2)	6507345000		\$ 14,040.00
6" Groove/Groove (ANSI/AWWA C606)	6507065000		\$ 16,200.00
6" Flange/Flange Class 150 (ASME B16.5)	6507165000		\$ 16,200.00
6" Flange/Flange Class 300 (ASME B16.5)	6507265000		\$ 16,200.00
6" Flange/Flange PN16 (ISO 7005-2)	6507365000		\$ 16,200.00
165MM Groove/Groove (ANSI/AWWA C606)	6507055000		\$ 16,200.00

Notes:

Base trim does not include drain trim, alarm test line, or control valve. Please see the last page of the DDV section for optional trim components.

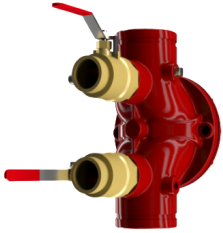
DDV DIAPHRAGM DELUGE VALVE

- Bulletin 550

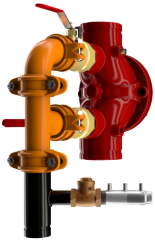


LOWER BALL VALVE

- Lower & Upper Ball Valve Option X 2



DUAL BALL VALVE



FULL DRAIN VALVE

Description	Part Number	Short Code	List Price
DRAIN TRIM OPTIONS- SELECT ONE			
Lower Ball Valve - 1-1/2" & 2"	77000300		\$ 162.00
Lower Ball Valve - 2-1/2", 3"	77000299		\$ 378.00
Lower Ball Valve - 4", 6"	9884011D		\$ 648.00
Lower & Upper Ball Valve -1 -1/2" & 2"	77000300		\$ 162.00
Lower & Upper Ball Valve - 2-1/2", 3"	77000299		\$ 378.00
Lower & Upper Ball Valve - 4", 6"	9884011D		\$ 648.00
Full Drain Trim - 1-1/2" & 2"	77037003		\$ 702.00
Full Drain Trim - 2-1/2", 3"	77037004		\$ 1,188.00
Full Drain Trim - 4", 6"	77037002		\$ 2,484.00
OPTIONAL TRIM			
DDV,ALARM TEST KIT MTO	6501040001		\$ 432.00
600 psi Gauge	98248005		\$ 108.00
CONTROL VALVES (UPPER & LOWER)			
Control Valve - 2-1/2"	77000302		\$ 972.00
Control Valve - 3"	77000303		\$ 972.00
Control Valve - 4"	77000304		\$ 1,080.00
Control Valve - 6"	77000306		\$ 1,404.00
Control Valve w/Inlet Spool - 2-1/2"	77000271		\$ 1,296.00
Control Valve w/Inlet Spool - 3"	77000273		\$ 1,296.00
Control Valve w/Inlet Spool - 4"	77000274		\$ 1,404.00
Control Valve w/Inlet Spool - 6"	77000276		\$ 1,944.00



DELUGE VALVES

- **MODEL DDX DELUGE VALVE**
- Electric, Wet Pilot Line, and Dry Pilot Line Trims
- See Bulletin 519

Description	Part Number	Short Code	List Price
MODEL DDX - DELUGE VALVE ONLY (GROOVED/GROOVED)			
Model DDX - 2"	6103022000	2DDX	\$ 5,867.15
Model DDX - 2-1/2"	6103022500	25DDX	\$ 5,867.15
Model DDX - 2 1/2 (76MM) Red	6103027600	76DDXMM	\$ 5,867.15
Model DDX-3"	6103030000	3DDX	\$ 6,057.08
Model DDX- 4"	6103040026	4DDX	\$ 6,190.51
Model DDX - 6"	6103060024	6DDX	\$ 7,610.11
Model 165MM	6103060028	165DDXMM	\$ 7,610.11
Model DDX - 8"	6103080001	8DDX	\$12,641.85
MODEL DDX - DELUGE VALVE ONLY (FLANGE/FLANGE)			
Model DDX- 4"	6103040045	4DDXF	\$ 6,190.51
Model DDX - 6"	6103060046	6DDXF	\$ 7,610.11
Model DDX - 8"	6103080016	8DDXF	\$12,641.85
MODEL DDX - DELUGE VALVE ONLY (FLANGE/GROOVED)			
Model DDX- 4"	6103040044	4DDXFG	\$ 6,190.51
Model DDX - 6"	6103060045	6DDXFG	\$ 7,610.11
Model 165MM	6103060052	165DDXFG	\$ 7,610.11
DELUGE TRIM ONLY — SEGMENTALLY ASSEMBLED-WITH PRESSURE SWITCH			
Wet Pilot Line 2", 2-1/2" & 3"	6520702010	25DDXWPN	\$ 3,736.17
Wet Pilot Line 4", 6" & 8"	6520703010	4DDXWPN	\$ 3,736.17
Dry Pilot Line 2", 2-1/2" & 3"	6520802010	25DDXDPPN	\$ 5,596.93
Dry Pilot Line 4", 6" & 8"	6520803010	4DDXDPPN	\$ 5,596.93
Electric Release 2", 2-1/2" & 3"	6520902110	25DDXEPN	\$ 5,230.31
Electric Release 4", 6" & 8"	6520903110	4DDXEPN	\$ 5,230.31
DELUGE TRIM ONLY — INDIVIDUAL PARTS-WITH PRESSURE SWITCH			
Wet Pilot Line 2", 2-1/2" & 3"	6520700010	25DDXWLN	\$ 3,545.05
Wet Pilot Line 4", 6" & 8"	6520701010	4DDXWLN	\$ 3,545.05
Dry Pilot Line 2", 2-1/2" & 3"	6520800010	25DDXDPLN	\$ 5,242.33
Dry Pilot Line 4", 6" & 8"	6520801010	4DDXDPLN	\$ 5,242.33
Electric Release 2", 2-1/2" & 3"	6520900110	25DDXELN	\$ 4,854.07
Electric Release 4", 6" & 8"	6520901110	4DDXELN	\$ 4,854.07
DELUGE TRIM ONLY - SEGMENTALLY ASSEMBLED-WITHOUT PRESSURE SWITCH			
2,2.5&3,DDX,WET PILOT TRIM,SEG W/O PS N	6520702000		\$ 3,196.17
4,6&8,DDX,WET PILOT TRIM,SEG W/O PS N	6520703000		\$ 3,196.17
2,2.5&3,DDX,DRY PILOT TRIM,SEG.W/O PS	6520802000		\$ 4,516.93
4,6&8,DDX,DRY PILOT TRIM,SEG W/O PS	6520803000		\$ 4,516.93
2,2.5&3,DDX,ELECTRIC TRIM,175,SEG W/O PS	6520902100		\$ 4,690.31
4,6&8,DDX,ELECTRIC TRIM,175,SEG W/O PS	6520903100		\$ 4,690.31
DELUGE TRIM ONLY - INDIVIDUAL PARTS-WITHOUT PRESSURE SWITCH			
2,2.5&3,DDX,WET PILOT TRIM,LOOSE W/O PS	6520700000	25DDXWLWOS	\$ 3,005.05
4,6&8,DDX,WET PILOT TRIM,LOOSE W/O PS	6520701000	4DDXWLWOS	\$ 3,005.05
2,2.5&3,DDX,DRY PILOT TRIM,LOOSE W/O PS	6520800000		\$ 4,162.33
4,6&8,DDX,DRY PILOT TRIM,LOOSE W/O PS	6520801000	4DDXDPLWOS	\$ 4,162.33
2,2.5&3,DDX,ELECTRIC TRIM,LOOSE W/O PS	6520900100	25DDXELWOS	\$ 4,314.07
4,6&8,DDX,ELECTRIC TRIM,175,LOOSE W/O PS	6520901100	4DDXELWOS	\$ 4,314.07

Notes:

We have an option to order our trim with or without the Pressure Switches



DELUGE VALVES

- **MODEL DDX DELUGE VALVE**
- Electric, Wet Pilot Line, and Dry Pilot Line Trims
- See Bulletin 519

Description	Part Number	Short Code	List Price
MODEL DDX - DELUGE VALVES FULLY ASSEMBLED - ELECTRIC TRIM			
2" Electric Release	6522904110	2DDXFEN	\$ 12,424.03
2" Electric Release w/Control Valve	6522908110	2DDXFEVN	\$ 13,762.39
2-1/2" Electric Release	6521904110	25DDXFEN	\$ 12,424.03
2-1/2" Electric Release w/Control Valve	6521908110	25DDXFEVN	\$ 13,762.39
3" Electric Release	6523904110	3DDXFEN	\$ 12,806.24
3" Electric Release w/Control Valve	6523908110	3DDXFEVN	\$ 13,952.89
76MM Electric Release	6525905110	76DDXFEN	\$ 12,424.03
4" Electric Release	6524904110	4DDXFEN	\$ 12,820.81
4" Electric Release w/Control Valve	6524908110	4DDXFEVN	\$ 14,148.24
6" Electric Release	6526904110	6DDXFEN	\$ 14,252.60
6" Electric Release w/Control Valve	6526908110	6DDXFEVN	\$ 15,532.47
165MM, DDX, Valve, w/Electric	6527905110	165DDXFVN	\$ 14,252.60
8" Electric Release	6528904110	8DDXFEN	\$ 19,159.50
8" Electric Release w/Control Valve	6528908110	8DDXFEVN	\$ 21,736.49
MODEL DDX - DELUGE VALVES FULLY ASSEMBLED - WET PILOT LINE TRIM			
2" Wet Pilot Line	6522704010	2DDXFVN	\$ 10,704.67
2" Wet Pilot Line w/Control Valve	6522708010	2DDXFVNV	\$ 12,041.82
2-1/2" Wet Pilot Line	6521704010	25DDXFVN	\$ 10,704.67
2-1/2" Wet Pilot Line w/Control Valve	6521708010	25DDXFVNV	\$ 12,041.82
3" Wet Pilot Line	6523704010	3DDXFVN	\$ 11,086.88
3" Wet Pilot Line w/Control Valve	6523708010	3DDXFVNV	\$ 12,424.03
76MM Wet Pilot Line	6525705010	76DDXFVN	\$ 10,704.67
4" Wet Pilot Line	6524704010	4DDXFVN	\$ 11,352.61
4" Wet Pilot Line w/Control Valve	6524708010	4DDXFVNV	\$ 12,681.26
6" Wet Pilot Line	6526704010	6DDXFVN	\$ 12,784.40
6" Wet Pilot Line w/Control Valve	6526708010	6DDXFVNV	\$ 14,646.94
165MM, DDX, Valve, w/Wet Pilot	6527705010	165DDXFVN	\$ 12,784.25
8" Wet Pilot Line	6528704010	8DDXFVN	\$ 18,632.89
8" Wet Pilot Line w/Control Valve	6528708010	8DDXFVNV	\$ 22,490.23
MODEL DDX - DELUGE VALVES FULLY ASSEMBLED - DRY PILOT LINE TRIM			
2" Dry Pilot Line	6522804010	2DDXFDPN	\$ 12,615.74
2" Dry Pilot Line w/Control Valve	6522808010	2DDXFDPVN	\$ 13,952.89
2-1/2" Dry Pilot Line	6521804010	25DDXFDPN	\$ 12,615.74
2-1/2" Dry Pilot Line w/Control Valve	6521808010	25DDXFDPVN	\$ 13,952.89
3" Dry Pilot Line	6523804010	3DDXFDPN	\$ 12,997.96
3" Dry Pilot Line w/Control Valve	6523808010	3DDXFDPVN	\$ 14,335.10
76MM Dry Pilot Line	6525805010	76DDXFDPN	\$ 12,615.74
4" Dry Pilot Line	6524804010	4DDXFDPN	\$ 13,178.75
4" Dry Pilot Line w/Control Valve	6524808010	4DDXFDPVN	\$ 14,508.61
6" Dry Pilot Line	6526804010	6DDXFDPN	\$ 14,611.75
6" Dry Pilot Line w/Control Valve	6526808010	6DDXFDPVN	\$ 16,473.08
165MM, DDX, Valve, w/ Dry Pilot line	6527805010	165DDXFDPN	\$ 14,611.75
8" Dry Pilot Line	6528804010	8DDXFDPN	\$ 19,510.17
8" Dry Pilot Line w/Control Valve	6528808010	8DDXFDPVN	\$ 23,716.96

Notes: