



Model B-1 Accelerator

VALVES ACCESSORIES

- See Bulletins 250, 251, 320 & 322



NITROGEN MAINTENANCE DEVICES

- NS-PaK and NS-ASAM
- See Bulletin 254

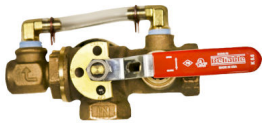
ACD Dry System Auxiliary Condensate Drain w-Sight Glass

- See Bulletin 441

Description	Part Number	Short Code	List Price
MODEL B1 ACCELERATOR			
B1 Accelerator	6301000300	AE	\$3,204.34
B2 Accelerator Trim	6516000002	ACT	\$1,317.63
Replacement Parts Kit - B1	6888000100	B1RPK	\$1,088.62
DRY VALVE TRIM ACCESSORIES			
Fill Line- Model A (2-1/2")	6501110100	25FLTG	\$ 416.99
Fill Line- Model D (4 & 6")	6501070100	4FLTG	\$ 416.99
Priming Chamber	6501080100	PCG	\$ 728.03
AIR MAINTENANCE DEVICE			
A Owner's Air (factory set 10psi)	6304001110	AMDA10	\$2,011.48
A Owner's Air (factory set 23psi)	6304001123	AMDA23	\$2,011.48
B Air Compressor Control Assembly	6304012100	AMDB	\$2,284.91
PRESSURE ALARM SWITCHES			
EPS10-1 Alarm, Single SPDT (System Sensor)- Set 4-8PSI	6999991339	EPS10-1	\$ 357.70
EPS10-2 Alarm, Double SPDT (System Sensor)- Set 4-8PSI	6999991212	EPS10-2	\$ 414.63
EPS40-1 Supervisory, Single SPDT- Adj 10-100PSI	6999991213	EPS40-1	\$ 357.70
EPS40-2 High/Low Supervisory Double SPDT- Adj 10-100PSI	6999991340	EPS40-2	\$ 414.63
VALVE SEAT WRENCHES			
2-1/2" & 4" Model D Dry Pipe Valve	6881340000	W4DPV	\$ 314.45
6" Model D Dry Pipe Valve	6881360000	W6DPV	\$ 341.80

Description	Part Number	Short Code	List Price
NS-PAK			
NS-PaK Nitrogen Regulator System	6704030021	NSPAK	\$12,697.60
NS-ASAM			
Nitrogen Maintenance Device with Pressure Switch	6704030022	NSASAM	\$ 8,465.07
NITROGEN REGULATING DEVICE			
Nitrogen Regulating Device w/ Switch	6304030101		\$ 2,515.62
Nitrogen Regulating Device w/o Switch	6304030100		\$ 1,915.77

Description	Part Number	Short Code	List Price
DRY SYSTEM AUXILIARY CONDENSATE DRAIN			
ACD Dry System Auxiliary Condensate Drain w- Sight Glass	6501190000	ACD	\$1,102.15



TD TEST AND DRAIN

- See Bulletin 618
- Optional Pressure Relief Kit



PRESSURE RELIEF TRIM KITS

- See Bulletin 618



A PRESSURE RELIEF VALVE

- See Bulletin 257



AAV AUTOMATIC AIR VENT

- **Stainless Steel Construction**
- **175 psi and 300 psi option**
- See Bulletin 620

Description	K-Factor	Part Number	Short Code	List Price
MODEL TD TEST AND DRAIN - THREADED				
RASCO T&D,1",THR,2.8K,300PSI,UL/FM	K2.8 (40)	7M99003865	RTD128	\$S 547.11
RASCO T&D,1",THR,4.2K,300PSI,UL/FM	K4.2 (60)	7M99003866	RTD142	\$S 547.11
RASCO T&D,1",THR,5.6K,300PSI,UL/FM	K5.6 (80)	7M99003867	RTD156	\$S 547.11
RASCO T&D,1.25",THR,2.8K,300PSI,UL/FM	K2.8 (40)	7M99004558	RTD12528	\$S 726.87
RASCO T&D,1.25",THR,4.2K,300PSI,UL/FM	K4.2 (60)	7M99003868	RTD12542	\$S 726.87
RASCO T&D,1.25",THR,5.6K,300PSI,UL/FM	K5.6 (80)	7M99003869	RTD12556	\$S 726.87
RASCO T&D,1.25",THR,8.0K,300PSI,UL/FM	K8.0 (115)	7M99003870	RTD12580	\$S 726.87
RASCO T&D,1.25",THR,11.2K,300PSI,UL/FM	K11.2 (160)	7M99003871	RTD125112	\$S 726.87
RASCO T&D,2",THR,2.8K,300PSI,UL/FM	K2.8 (40)	7M99004560	RTD228	\$S1,185.07
RASCO T&D,2",THR,4.2K,300PSI,UL/FM	K4.2 (60)	7M99004510	RTD242	\$S1,185.07
RASCO T&D,2",THR,5.6K,300PSI,UL/FM	K5.6 (80)	7M99003872	RTD256	\$S1,185.07
RASCO T&D,2",THR,8.0K,300PSI,UL/FM	K8 (115)	7M99003873	RTD280	\$S1,185.07
RASCO T&D,2",THR,11.2K,300PSI,UL/FM	K11.2 (160)	7M99003874	RTD2112	\$S1,185.07
RASCO T&D,2",THR,16.8K,300PSI,UL/FM	K16.8 (240)	7M99003875	RTD2168	\$S1,185.07
MODEL TD TEST AND DRAIN - GROOVED X THREADED				
RASCO T&D,1.25",GXT,2.8K,300PSI,UL/FM	K2.8 (40)	7M99004559	RTD12528GT	\$S 792.07
RASCO T&D,1.25",GXT,4.2K,300PSI,UL/FM	K4.2 (60)	7M99004106	RTD12542GT	\$S 792.07
RASCO T&D,1.25",GXT,5.6K,300PSI,UL/FM	K5.6 (80)	7M99004107	RTD12556GT	\$S 792.07
RASCO T&D,1.25",GXT,8.0K,300PSI,UL/FM	K8.0 (115)	7M99004108	RTD12580GT	\$S 792.07
RASCO T&D,1.25",GXT,11.2K,300PSI,UL/FM	K11.2 (160)	7M99004109	RTD125112GT	\$S 792.07
RASCO T&D,2",GXT,2.8K,300PSI,UL/FM	K2.8 (40)	7M99004561	RTD228GT	\$S1,291.39
RASCO T&D,2",GXT,4.2K,300PSI,UL/FM	K4.2 (60)	7M99004540	RTD242GT	\$S1,291.39
RASCO T&D,2",GXT,5.6K,300PSI,UL/FM	K5.6 (80)	7M99004110	RTD256GT	\$S1,291.39
RASCO T&D,2",GXT,8.0K,300PSI,UL/FM	K8.0 (115)	7M99004111	RTD280GT	\$S1,291.39
RASCO T&D,2",GXT,11.2K,300PSI,UL/FM	K11.2 (160)	7M99004112	RTD2112GT	\$S1,291.39
RASCO T&D,2",GXT,16.8K,300PSI,UL/FM	K16.8 (240)	7M99004113	RTD2168GT	\$S1,291.39

Description	Part Number	Short Code	List Price
MODEL A PRESSURE RELIEF VALVE - NPT			
MOD A 175 PSI PRESSURE RELIEF VLV 1/2NPT	6501000001	PRV175	\$S 150.70
A Pressure Relief Valve, 185 psi, 1/2 NPT	6501000002	PRV185	\$S 150.70
A Pressure Relief Valve, 210 psi, 1/2 NPT	6501000003	PRV210	\$S 226.06
A Pressure Relief Valve, 260 psi, 1/2 NPT	6501000004	PRV260	\$S 226.06
A Pressure Relief Valve, 310 psi, 1/2 NPT	6501000005	PRV310	\$S 226.06
MODEL A PRESSURE RELIEF VALVE - BSPT			
MOD A 175PSI PRESSURE RELIEF VLV 1/2BSPT	6501000006		\$S 150.70
MOD A PRESSURE RELIEF VLV 185PSI 1/2BSPT	6501000007		\$S 150.70
MOD A 210PSI PRESSURE RELIEF VLV 1/2BSPT	6501000008		\$S 226.06
MOD A 260PSI PRESSURE RELIEF VLV 1/2BSPT	6501000009		\$S 226.06
MOD A 310PSI PRESSURE RELIEF VLV 1/2BSPT	6501000010		\$S 226.06
MODEL AAV AUTOMATIC AIR VENT			
AAV-S,AUTOMATIC AIR VENT, 175 PSI	6301600000	AAV175	\$S2,738.03
AAV-S,AUTOMATIC AIR VENT, 300 PSI	6301600001	AAV300	\$S5,780.28

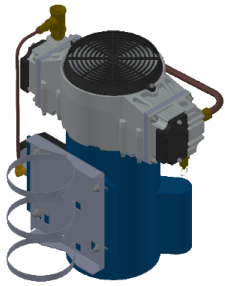
Description	Part Number	Short Code	List Price
PRESSURE RELIEF TRIM KITS			
Pressure Relief Kit - 175 psi	6501203550	PRT175	\$S 326.73
Pressure Relief Kit - 185 psi	6501203545	PRT185	\$S 326.73
Pressure Relief Kit - 210 psi	6501213550	PRT210	\$S 326.73
Pressure Relief Kit - 260 psi	6501203546	PRT260	\$S 490.09
Pressure Relief Kit - 310 psi	6501203547	PRT310	\$S 490.09



**QRM RISER &
 TANK MOUNTED
 AIR
 COMPRESSORS**

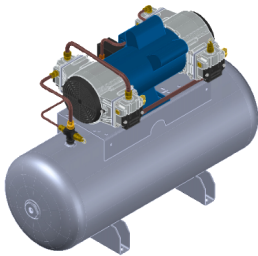
- See Bulletin 256

Description	Part Number	Short Code	List Price
QRM2 AIR COMPRESSORS - TANKLESS w/CHECK VALVE & PRESSURE SWITCH			
RASCO AIR,QRM2-25115 1/4HP,115,TANKLESS	6872000001	14QRM	S\$3,931.37
RASCO AIR,QRM2-25220 1/4HP,220,TANKLESS	6872000002	14QRM220	S\$4,337.74
RASCO AIR,QRM2-50115 1/2HP,115,TANKLESS	6872000005	12QRM	S\$5,430.84
RASCO AIR,QRM2-50220 1/2HP,220,TANKLESS	6872000006	12QRM220	S\$5,665.53
RASCO AIR,QRM2-25220-50HZ,1/4,220,TNKLESS	6872000011	14QRM50	S\$4,337.74
RASCOAIR,QRM2-50220-50HZ,1/2,220,TNKLESS	6872000013	12QRM50	S\$5,665.53
RASCO AIR,QRM2-25115-4050 1/4HP,115,TL	6872000040	14QRM4050	S\$4,002.25
RASCO AIR,QRM2-50115-4050 1/2HP,115,TL	6872000042	12QRM4050	S\$5,430.84
RASCO AIR,QRM2-25220-4050 1/4HP,220,TL	6872000041	14QRM2204050	S\$4,337.74
RASCO AIR,QRM2-50220-4050 1/2HP,220,TL	6872000043	12QRM2204050	S\$5,665.53
QRM2 AIR COMPRESSORS - TANK MOUNTED			
RASCO AIR,QRM2-25115T 1/4HP,115,TANK	6872000003	14QRMT	S\$4,937.84
RASCO AIR,QRM2-25220T 1/4HP,220,TANK	6872000004	14QRM220T	S\$5,382.01
RASCO AIR,QRM2-50115T 1/2HP,115,TANK	6872000007	12QRMT	S\$6,278.23
RASCO AIR,QRM2-50220T 1/2HP,220,TANK	6872000008	12QRM220T	S\$6,545.99
RASCO AIR,QRM2-100115T,1 HP,115,TANK	6872000009	1QRMT	S\$8,306.92
RASCO AIR,QRM2-100220T,1 HP,220,TANK	6872000010	1QRM220T	S\$8,823.54
RASCO AIR,QRM2-25220T-50HZ,1/4,220,TANK	6872000012	14QRM50T	S\$5,382.01
RASCO AIR,QRM2-50220T-50HZ,1/2,220,TANK	6872000014	12QRM50T	S\$6,545.99
RASCO AIR,QRM2-100220T-50HZ,1,220,TANK	6872000015	1QRM50T	S\$8,823.54
CONNECTION KITS			
CONNECTION KIT, TANKLESS COMPRESSOR	650120011G	CKTL	S\$ 773.36
CONNECTION KIT, TANK MOUNTED COMPRESSOR	650120011H	CKTM	S\$1,863.31
FLEX HOSE ONLY			
FLEX HOSE, STAINLESS STEEL, 1/2" x 30"	6872000000	QRMFLEX	S\$ 286.66



RRM RISER MOUNTED AIR COMPRESSOR

- See Bulletin 258



RTM TANK MOUNTED AIR COMPRESSOR

- See Bulletin 258

Description	Part Number	Short Code	List Price
RRM AIR COMPRESSORS - RISER MOUNTED			
RASCO AIR,RRM23016-2026,1/6HP,115/220VAC	6872000020	16RRM	S\$ 3,915.62
RASCO AIR,RRM40033-2026,1/3HP,115/220VAC	6872000021	13RRM	S\$ 4,770.89
RASCO AIR,RRM70050-2026,1/2HP,115/220VAC	6872000022	12RRM	S\$ 6,240.43
RASCO AIR,RRM23016-4050 1/6HP,115,CP	6872000044	16RRM4050	S\$ 3,914.05
RASCO AIR,RRM40033-4050 1/3HP,115,CP	6872000045	13RRM4050	S\$ 4,764.59
RASCO AIR,RRM70050-4050 1/2HP,115,CP	6872000046	12RRM4050	S\$ 6,221.53
RTM AIR COMPRESSORS - TANK MOUNTED			
RASCO AIR,RTM25033-80100,1/3HP,115/220VA	6872000023	13RTM	S\$ 7,875.35
RASCO AIR,RTM36575-80100,3/4HP,115/220VA	6872000024	34RTM	S\$10,080.45
RASCO AIR,RTM550100-80100,1HP,115/220VAC	6872000025	1RTM	S\$12,600.56
RASCO AIR,RTM915150-80100,1-1/2HP 115/22	6872000026	112RTM	S\$16,065.71
RASCO AIR,RTM1100200-80100 2HP,115/220VA	6872000027	2RTM	S\$18,585.82
CONNECTION KITS			
Connection Kit, Tankless Compressor	650120011G	CKTL	S\$ 773.36
Connection Kit, Tank Mounted Compressor	650120011H	CKTM	S\$ 1,863.31
FLEX HOSE -- SOLD SEPARATELY			
Flex Hose, Stainless Steel, 1/2" x 30"	6872000000	QRMFLEX	S\$ 286.66

Features

- Three riser mount tank-less options (RRM)
- Five tank mounted options (RTM)
- Quiet oil-less piston compressors
- UL Listed pressure switch
- Flexile connection kits

Notes:

1. Models 16RRM, 13RRM, and 12RRM are preset at 20 psi start/26 psi stop for use with low pressure systems such as the Model DDX-LP and Model EX.
2. Models 16RRM4050, 13RRM4050, and 12RRM4050 are preset at 40 psi start/50 psi stop for use with conventional differential valves such as the Model FX and Model D.

AIR COMPRESSORS



Description	Part Number	Short Code	List Price
GAST AIR COMPRESSORS -- BARE			
1/6 HP, 115-60-1, Gast 1LAA-10-M100X	6999990904	16A	S\$ 1,875.98
1/4 HP, 115-60-1, Gast 2LAF-10-M200X	6999991538	14A	S\$ 2,239.46
1/3 HP, 115-60-1, Gast 3LBA-33-M300X	6702000033	13A	S\$ 2,708.48
1/2 HP, 115-60-1, Gast 4LCB-10-M450X	6999991518	12A	S\$ 3,318.19
3/4 HP, 115/230-60-1, Gast 5LCA-23-550NGX	6702000075	34A	S\$ 3,451.08
1 HP, 115/230-60-1, Gast 6LCF-10-M616X	6999991315	1A	S\$ 4,447.81
1-1/2 HP, 115/230-60-1, Gast 7LDE-10-M700X	6702000150	112A	S\$ 7,465.14
2 HP, 115/230-60-1, Gast 8LDF-10-M850X	6999991569	2A	S\$ 9,184.85
GAST AIR COMPRESSORS WITH CHECK VALVE AND PRESSURE SWITCH			
1/6 HP, 115-60-1, Gast 1LAA-32-M100X	6999991173	16PA	S\$ 2,966.43
1/4 HP, 115-60-1, Gast 2LAF-12-M200X	6999990905	14PA	S\$ 3,099.32
1/3 HP, 115-60-1, Gast 3LBA-32-M300X	6999990906	13PA	S\$ 3,427.63
1/2 HP, 115-60-1, Gast 4LCB-21-M450X	6999990907	12PA	S\$ 4,103.87
3/4 HP, 115/230-60-1, Gast 5LCA-22-M550X	6999990908	34PA	S\$ 4,447.81
1 HP, 115/230-60-1, Gast 6LCF-13-M616X	6999990909	1PA	S\$ 5,276.41
1-1/2 HP, 115/230-60-1, Gast 7LDE-16-M750X	6999990910	112PA	S\$ 8,090.49
2 HP, 115/230-60-1, Gast 8LDF-16-M850X	6999991325	2PA	S\$10,435.56
GAST AIR COMPRESSORS -- TANK MOUNTED			
1/6 HP, 115-60-1, Gast 1HAB-11T-M100X, 2 GAL	6999991027	16TA	S\$ 4,338.38
1/4 HP, 115-60-1, Gast 2LAF-11T-M200X, 12 GAL	6999991163	14TA	S\$ 6,011.19
1/3 HP, 115-60-1, Gast 3LBA-11T-M300AX 12 GAL	6999991285	13TA	S\$ 6,792.88
1/2 HP, 115-60-1, Gast 4LCB-11T-M450X, 20 GAL	6999991136	12TA	S\$ 7,465.14
3/4 HP, 115/230-60-1, Gast 5LCA-11T-M550X, 20 GAL	6999991217	34TA	S\$ 7,652.74
1 HP, 115/230-60-1, Gast 6LCF-11T-M616X, 30 GAL	6999991289	1TA	S\$ 9,341.19
1-1/2 HP, 115/230-60-1, Gast 7LDE-11T-M750X, 30 GAL	6999991567	112TA	S\$13,874.99
2 HP, 115/230-60-1, Gast 8LDF-11TC-M850X, 30GAL	6999991541	2TA	S\$18,799.64
GAST AIR COMPRESSORS -- REPAIR KITS *			
3/4 HP, Repair Kit	6888000020	K263	S\$ 617.46
1-1/2 HP, Repair Kit	6888000030	K303	S\$ 992.67
Riser Mounting Brackets #AT670	6999990969	GMB	S\$ 261.79
Riser Mounting Brackets #AT670A	6990007698	GMBL	S\$ 562.74

*Repair Kit Contains: Gaskets, Piston, Seals, Piston Rings, In/Out Valve Plates, Manifold Seals and Felts (for Filters)



Description	System Capacity	Part Number	Short Code	List Price
C-AIRE HEAVY DUTY - SINGLE PHASE - TANK MOUNTED				
S175-HD1-115 (115V, 1HP, 3 GALLON)	175 gallons	6990012386	C175	S\$ 4,992.61
S265H-HD1-115 (115V, 1-1/2 HP, 3 GALLON)	265 gallons	6990012600	C265	S\$ 5,084.75
S325H-HD1-115 (115V, 1-1/2 HP, 3 GALLON)	325 gallons	6990012601	C325	S\$ 5,215.49
S500H-HD1-115 (115V, 1-1/2 HP, 30 GALLON)	500 gallons	6990012602	C500	S\$ 7,873.25
S750H-HD1-230 (3HP,230V,30 GALLON H)	750 gallons	6990013997	C750	S\$ 8,987.86
S900H-HD1-230 (5HP,230V,30 GALLON H)	900 gallons	6990013998	C900	S\$ 9,191.56
S1300H-HD1-230S (5HP,230V,60 GALLON H)	1300 gallons	6990013999	C1300	S\$15,531.35
S1700H-HD1-230S (7.5HP,230V,60 GALLON H)	1700 gallons	6990014000	C1700	S\$16,423.96
C-AIRE STANDARD DUTY - SINGLE PHASE - TANK MOUNTED				
S300H-SD1-115 (1HP,115V,3 GALLON H)	300 gallons	6990013994	C300	S\$ 4,243.72
S2000H-SD1-230S (7.5HP,230V,60 GALLON H)	2000 gallons			S\$ Call

VALVE ACCESSORIES

- Additional Sprinkler and Valve Signs available upon request

Description	Part Number	Short Code	List Price
PRESSURE GAUGES			
GAUGE,WATER,0-300,1/4	98248001	WATER	S\$ 146.48
GAUGE,AIR,0-80,1/4NPT	98248000	AIR	S\$ 156.62
GAUGE,AIR,58 OZ,1/4NPT	98248002	AIRO	S\$ 554.75
INSPECTORS TEST CONNECTIONS			
Sight Test Type (Model B)	6851010000	ISC	S\$ 604.98
Blind Test Type (Model A)	6851020000	IBC	S\$ 201.66
AUTOMATIC BALL DRIPS			
1/2,BALL DRIP VALVE,AUTO	78653500	5ABD	S\$ 350.87
3/4,BALL DRIP VALVE,AUTO,MOD C	78653700	75ABD	S\$ 400.93
MECHANICAL BALL DRIPS			
BALL DRIP VALVE 1/2" MECHANICAL MOD. C	78653100	5MBD	S\$ 626.36
1/2,BALL DRIP VALVE,MECH,MOD D	78653800		S\$ 400.93
STRAINER			
3/4" NPT (Female)	78650200	34ST	S\$ 368.11
MISCELLANEOUS			
Model C Sight Drain 2" NPT (Female)	6863000000	2ISC	S\$ 656.24
Model B Drum Drip Only 3/4" NPT (Female)	71010448		S\$ 402.29
Model A Fill Cup 1/2" NPT (Female)	75000050	5FC	S\$ 189.87
Model A Fill Cup 3/4" NPT (Female)	75000075	75FC	S\$ 214.83
Model A Control Valve Seal Only	6869800000		S\$ 52.48
SIGNS—MODEL A			
Valve Control Sign	6892011000	VCS	S\$ 24.20
SIGNS—MODEL B			
Inspector Test Sign	6892110000	ITS	S\$ 4.71
Open Sprinkler Control Sign	6892030000	OSCS	S\$ 5.04
Open Sprinkler Drain Sign	6892040000	OSDS	S\$ 5.04
Test Valve Sign	6892050000	TVS	S\$ 5.04
Water Motor Line Sign	6892060000	WMLS	S\$ 5.04
Auxiliary Drain Sign	6892070000	ADS	S\$ 4.71
Main Drain Sign	6892080000	MDS	S\$ 4.71
Drain Sign	6892090000	DS	S\$ 4.54
Alarm Test Sign	6892100000	ATS	S\$ 5.04
SIGNS—MODEL C			
Cold Weather Sign	6892010000	CWS	S\$ 16.90
SIGNS—MODEL D			
Fire Alarm Sign	6892020000	FAS	S\$ 24.20
SIGNS—MODEL E			
Hydraulically Calculated System	6892120000	HCS	S\$ 13.28

Notes:

*PERSONALIZED PRESSURE GAUGES ARE AVAILABLE UPON REQUEST. PLEASE CONTACT OUR CUSTOMER SERVICE DEPARTMENT FOR MORE INFORMATION.



RESIDENTIAL RISERS

- GROOVED END
- See Bulletin 425
- WITH POTTER SWITCHES

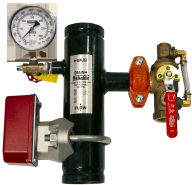
RESIDENTIAL RISERS

- THREADED MALE NPT 1" (25)
- See Bulletin 425
- WITH POTTER SWITCHES

Description	Size	Part Number	Short Code	List Price
RESIDENTIAL RISER WITH THREAD FEMALE NPT 1" (25) - POTTER				
1" RES RISER ASSEMBLY,POTTER		6A000RP000	1RRNP	S\$1,875.34
1 1/2" RES RISER ASSEMBLY,POTTER		6A030RP000	15RRNP	S\$1,875.34
2" RES RISER ASSEMBLY,POTTER		6A060RP000	2RRNP	S\$2,059.88
RESIDENTIAL RISER WITH THREADED MALE NPT 1"(25)- POTTER				
1" Res Riser Assembly MNPT		6A020RP000		S\$1,901.41
RESIDENTIAL RISER WITH PRESSURE RELIEF VALVE MALE NPT 1" (25)-POTTER				
1" RES RISER ASSBLY MNPT W/PRV 175 PTR R		6A020RP001		S\$2,738.03
1" RES RISER ASSBLY MNPT W/PRV 185 PTR R		6A020RP002		S\$2,738.03
RESIDENTIAL RISER WITH TEST & DRAIN MALE NPT 1" (25) POTTER				
1" RES RISER MNPT W/2.8 TD PTR R MTO		6A020RP010		S\$2,890.14
1" RES RISER MNPT W/4.2 TD PTR R		6A020RP020		S\$2,890.14
1" RES RISER MNPT W/5.6 TD PTR R		6A020RP030		S\$2,890.14
RESIDENTIAL RISER WITH TEST & DRAIN, PRV 175& 185 PSI MALE NPT 1" POTTER				
1" RES RISER MNPT W/2.8 TD PRV 175 PTR R		6A020RP011		S\$3,194.36
1" RES RISER MNPT W/2.8 TD PRV 185 PTR R		6A020RP012		S\$3,194.36
1" RES RISER MNPT W/4.2 TD PRV 175 PTR R		6A020RP021		S\$3,194.36
1" RES RISER MNPT W/4.2 TD PRV 185 PTR R		6A020RP022		S\$3,194.36
1" RES RISER MNPT W/5.6 TD PRV 175 PTR R		6A020RP031		S\$3,194.36
1" RES RISER MNPT W/5.6 TD PRV 185 PTR R		6A020RP032		S\$3,194.36
RESIDENTIAL RISER GROOVED END POTTER				
1 1/2" RES RISER ASSEMBLY GE PTR N		6A050RP000		S\$1,901.41
RESIDENTIAL RISER GROOVED END WITH PRESSURE RELIEF VALVE POTTER				
1 1/2" RES RISER GE PRV 175 PTR R		6A050RP001		S\$2,738.03
1 1/2" RES RISER GE PRV 185 PTR R		6A050RP002		S\$2,738.03
RESIDENTIAL RISER GROOVED END WITH TEST& DRAIN POTTER				
1 1/2" RES RISER ASSY GE W/2.8K TD PTR R		6A050RP010		S\$2,890.14
1 1/2" RES RISER ASSY GE W/4.2K TD PTR R		6A050RP020		S\$2,890.14
1 1/2" RES RISER GE W/5.6K TD PTR		6A050RP030		S\$2,890.14
RESIDENTIAL RISER GE WITH TEST & DRAIN,PRV 175& 185 PSI POTTER				
1 1/2" RES RISER GE W/2.8K TD PRV175 P R		6A050RP011		S\$3,194.36
1 1/2" RES RISER GE W/2.8K TD PRV185 P R		6A050RP012		S\$3,194.36
1 1/2" RESRISER GE W/4.2 TD PRV175 PTR R		6A050RP021		S\$3,194.36
1 1/2" RESRISER GE W/4.2 TD PRV185 PTR R		6A050RP022		S\$3,194.36
1 1/2" RESRISER GE W/5.6 TD PRV175 PTR R		6A050RP031		S\$3,194.36
1 1/2" RESRISER GE W/5.6 TD PRV185 PTR R		6A050RP032		S\$3,194.36

Model CR Commercial Riser For Commercial Applications

- For Commercial Applications
- See Bulletin 621
- **With Potter Switch**



Model CR Commercial Riser with Test & Drain

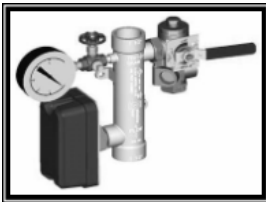
- For Commercial Applications
- See Bulletin 621
- **With Potter Switch**

Description	Size	Part Number	Short Code	List Price
MODEL CR COMMERCIAL RISER WITH BASIC TRIM-POTTER SWITCH				
Model CR Commercial Riser - Threaded	1-1/2" (40mm)	6A080CP000	15CRBPE	\$S\$2,013.27
Model CR Commercial Riser - Threaded	2" (50mm)	6A090CP000	2CRBPE	\$S\$2,317.50
Model CR Commercial Riser - Grooved	2" (50mm)	6A100CP000	2CRGBPE	\$S\$2,013.27
Model CR Commercial Riser - Grooved	2-1/2" (65mm)	6A120CP010	25CRGBPE	\$S\$2,210.82
Model CR Commercial Riser - Grooved	3" (80mm)	6A140CP010	3CRGBPE	\$S\$2,300.47
Model CR Commercial Riser - Grooved	4" (100mm)	6A160CP020	4CRGBPE	\$S\$2,731.68
Model CR Commercial Riser - Grooved	6" (150mm)	6A180CP020	6CRGBPE	\$S\$2,983.14
Model CR Commercial Riser - Grooved	8" (200mm)	6A190CP020	8CRGBPE	\$S\$3,270.48
MODEL CR COMMERCIAL RISER WITH TEST & DRAIN 2.8K-POTTER SWITCH				
Model CR Commercial Riser w- Test&Drain - Threaded	1-1/2" (40mm)	6A080CP030	15CR28PE	\$S\$2,304.51
Model CR Commercial Riser w- Test&Drain - Threaded	2" (50mm)	6A090CP030	2CR28PE	\$S\$2,304.51
Model CR Commercial Riser w- Test&Drain - Grooved	2" (50mm)	6A100CP030	2CRG28PE	\$S\$2,223.89
MODEL CR COMMERCIAL RISER WITH TEST & DRAIN 4.2K-POTTER SWITCH				
Model CR Commercial Riser w- Test&Drain - Threaded	1-1/2" (40mm)	6A080CP040	15CR42PE	\$S\$2,304.51
Model CR Commercial Riser w- Test&Drain - Threaded	2" (50mm)	6A090CP040	2CR42PE	\$S\$2,304.51
Model CR Commercial Riser w- Test&Drain - Grooved	2" (50mm)	6A100CP040	2CRG42PE	\$S\$2,223.89
Model CR Commercial Riser w- Test&Drain - Grooved	2-1/2" (65mm)	6A120CP060	25CRG42PE	\$S\$2,546.36
Model CR Commercial Riser w- Test&Drain - Grooved	3" (80mm)	6A140CP060	3CRG42PE	\$S\$2,546.36
MODEL CR COMMERCIAL RISER WITH TEST & DRAIN 5.6K-POTTER SWITCH				
Model CR Commercial Riser w- Test&Drain - Threaded	1-1/2" (40mm)	6A080CP050	15CR56PE	\$S\$2,304.51
Model CR Commercial Riser w- Test&Drain - Threaded	2" (50mm)	6A090CP050	2CR56PE	\$S\$2,304.51
Model CR Commercial Riser w- Test&Drain - Grooved	2" (50mm)	6A100CP050	2CRG56PE	\$S\$2,223.89
Model CR Commercial Riser w- Test&Drain - Grooved	2-1/2" (65mm)	6A120CP070	25CRG56PE	\$S\$2,546.36
Model CR Commercial Riser w- Test&Drain - Grooved	3" (80mm)	6A140CP070	3CRG56PE	\$S\$2,546.36
Model CR Commercial Riser w- Test&Drain - Grooved	4" (100mm)	6A160CP100	4CRG56PE	\$S\$3,191.32
Model CR Commercial Riser w- Test&Drain - Grooved	6" (150mm)	6A180CP100	6CRG56PE	\$S\$3,271.94
Model CR Commercial Riser w- Test&Drain - Grooved	8" (200mm)	6A190CP100	8CRG56PE	\$S\$3,997.52
MODEL CR COMMERCIAL RISER WITH TEST & DRAIN 8.0K-POTTER SWITCH				
Model CR Commercial Riser w- Test&Drain - Grooved	2-1/2" (65mm)	6A120CP080	25CRG80PE	\$S\$2,546.36
Model CR Commercial Riser w- Test&Drain - Grooved	3" (80mm)	6A140CP080	3CRG80PE	\$S\$2,546.36
Model CR Commercial Riser w- Test&Drain - Grooved	4" (100mm)	6A160CP110	4CRG80PE	\$S\$3,191.32
Model CR Commercial Riser w- Test&Drain - Grooved	6" (150mm)	6A180CP110	6CRG80PE	\$S\$3,271.94
Model CR Commercial Riser w- Test&Drain - Grooved	8" (200mm)	6A190CP110	8CRG80PE	\$S\$3,997.52
MODEL CR COMMERCIAL RISER WITH TEST & DRAIN 11.2K-POTTER SWITCH				
Model CR Commercial Riser w- Test&Drain - Grooved	2-1/2" (65mm)	6A120CP090	25CRG112PE	\$S\$2,546.36
Model CR Commercial Riser w- Test&Drain - Grooved	3" (80mm)	6A140CP090	3CRG112PE	\$S\$2,546.36
Model CR Commercial Riser w- Test&Drain - Grooved	4" (100mm)	6A160CP120	4CRG112PE	\$S\$3,191.32
Model CR Commercial Riser w- Test&Drain - Grooved	6" (150mm)	6A180CP120	6CRG112PE	\$S\$3,271.94
Model CR Commercial Riser w- Test&Drain - Grooved	8" (200mm)	6A190CP120	8CRG112PE	\$S\$3,997.52
MODEL CR COMMERCIAL RISER WITH TEST & DRAIN 16.8K-POTTER SWITCH				
Model CR Commercial Riser w- Test&Drain - Grooved	4" (100mm)	6A160CP130	4CRG168PE	\$S\$3,191.32
Model CR Commercial Riser w- Test&Drain - Grooved	6" (150mm)	6A180CP130	6CRG168PE	\$S\$3,271.94
Model CR Commercial Riser w- Test&Drain - Grooved	8" (200mm)	6A190CP130	8CRG168PE	\$S\$3,997.52
PRESSURE RELIEF KITS				
Pressure Relief Trim - 175 PSI	All Sizes	6501203550	PRT175	\$S\$ 326.73
Pressure Relief Trim - 185 PSI	All Sizes	6501203545	PRT185	\$S\$ 326.73
Pressure Relief Trim - 210 PSI	All Sizes	6501213550	PRT210	\$S\$ 326.73
Pressure Relief Trim - 260 PSI	All Sizes	6501203546	PRT260	\$S\$ 490.09
Pressure Relief Trim - 310 PSI	All Sizes	6501203547	PRT310	\$S\$ 490.09



Model CR Commercial Riser & PRV

- For Commercial Applications
- See Bulletin 621



Model CR Commercial Riser with Test & Drain & PRV

- For Commercial Applications
- See Bulletin 621
- **Items listed are with the 175 Pressure Relief Valve**

Description	Size	Part Number	Short Code	List Price
MODEL CR COMMERCIAL RISER WITH BASIC TRIM & PRV 175 PSI				
Model CR Commercial Riser - Threaded	1-1/2" (40mm)	6A080CS001	15CRBP	\$S\$2,207.98
Model CR Commercial Riser - Threaded	2" (50mm)	6A090CS001	2CRBP	\$S\$2,207.98
Model CR Commercial Riser - Grooved	2" (50mm)	6A100CS001	2CRGBP	\$S\$2,207.98
Model CR Commercial Riser - Grooved	2-1/2" (65mm)	6A120CS011	25CRGBP	\$S\$2,405.52
Model CR Commercial Riser - Grooved	3" (80mm)	6A140CS011	3CRGBP	\$S\$2,495.18
Model CR Commercial Riser - Grooved	4" (100mm)	6A160CS021	4CRGBP	\$S\$2,926.39
Model CR Commercial Riser - Grooved	6" (150mm)	6A180CS021	6CRGBP	\$S\$3,177.85
Model CR Commercial Riser - Grooved	8" (200mm)	6A190CS021	8CRGBP	\$S\$3,465.19
MODEL CR COMMERCIAL RISER WITH TEST & DRAIN & PRV K2.8 175 PSI				
Model CR Commercial Riser w- Test&Drain - Threaded	1-1/2" (40mm)	6A080CS031	15CR28P	\$S\$2,499.21
Model CR Commercial Riser w- Test&Drain - Threaded	2" (50mm)	6A090CS031	2CR28P	\$S\$2,499.21
Model CR Commercial Riser w- Test&Drain - Grooved	2" (50mm)	6A100CS031	2CRG28P	\$S\$2,418.59
MODEL CR COMMERCIAL RISER WITH TEST & DRAIN & PRV K4.2 175 PSI				
Model CR Commercial Riser w- Test&Drain - Threaded	1-1/2" (40mm)	6A080CS041	15CR42P	\$S\$2,499.21
Model CR Commercial Riser w- Test&Drain - Threaded	2" (50mm)	6A090CS041	2CR42P	\$S\$2,499.21
Model CR Commercial Riser w- Test&Drain - Grooved	2" (50mm)	6A100CS041	2CRG42P	\$S\$2,418.59
Model CR Commercial Riser w- Test&Drain - Grooved	2-1/2" (65mm)	6A120CS061	25CRG42P	\$S\$2,741.07
Model CR Commercial Riser w- Test&Drain - Grooved	3" (80mm)	6A140CS061	3CRG42P	\$S\$2,741.07
MODEL CR COMMERCIAL RISER WITH TEST & DRAIN & PRV K5.6 175 PSI				
Model CR Commercial Riser w- Test&Drain - Threaded	1-1/2" (40mm)	6A080CS051	15CR56P	\$S\$2,499.21
Model CR Commercial Riser w- Test&Drain - Threaded	2" (50mm)	6A090CS051	2CR56P	\$S\$2,499.21
Model CR Commercial Riser w- Test&Drain - Grooved	2" (50mm)	6A100CS051	2CRG56P	\$S\$2,418.59
Model CR Commercial Riser w- Test&Drain - Grooved	2-1/2" (65mm)	6A120CS071	25CRG56P	\$S\$2,741.07
Model CR Commercial Riser w- Test&Drain - Grooved	3" (80mm)	6A140CS071	3CRG56P	\$S\$2,741.07
Model CR Commercial Riser w- Test&Drain - Grooved	4" (100mm)	6A160CS101	4CRG56P	\$S\$3,675.04
Model CR Commercial Riser w- Test&Drain - Grooved	6" (150mm)	6A180CS101	6CRG56P	\$S\$3,845.85
Model CR Commercial Riser w- Test&Drain - Grooved	8" (200mm)			\$S\$ Call
MODEL CR COMMERCIAL RISER WITH TEST & DRAIN & PRV K8.0 175 PSI				
Model CR Commercial Riser w- Test&Drain - Grooved	2-1/2" (65mm)	6A120CS081	25CRG80P	\$S\$2,741.07
Model CR Commercial Riser w- Test&Drain - Grooved	3" (80mm)	6A140CS081	3CRG80P	\$S\$2,741.07
Model CR Commercial Riser w- Test&Drain - Grooved	4" (100mm)	6A160CS111	4CRG80P	\$S\$3,386.03
Model CR Commercial Riser w- Test&Drain - Grooved	6" (150mm)	6A180CS111	6CRG80P	\$S\$3,466.65
Model CR Commercial Riser w- Test&Drain - Grooved	8" (200mm)	6A190CS111	8CRG80P	\$S\$4,192.22
MODEL CR COMMERCIAL RISER WITH TEST & DRAIN & PRV K11.2 175 PSI				
Model CR Commercial Riser w- Test&Drain - Grooved	2-1/2" (65mm)	6A120CS091	25CRG112P	\$S\$2,741.07
Model CR Commercial Riser w- Test&Drain - Grooved	3" (80mm)	6A140CS091	3CRG112P	\$S\$2,741.07
Model CR Commercial Riser w- Test&Drain - Grooved	4" (100mm)	6A160CS121	4CRG112P	\$S\$3,386.03
Model CR Commercial Riser w- Test&Drain - Grooved	6" (150mm)	6A180CS121	6CRG112P	\$S\$3,466.65
Model CR Commercial Riser w- Test&Drain - Grooved	8" (200mm)	6A190CS121	8CRG112P	\$S\$4,192.22
MODEL CR COMMERCIAL RISER WITH TEST & DRAIN & PRV K16.8 175 PSI				
Model CR Commercial Riser w- Test&Drain - Grooved	4" (100mm)	6A160CS131	4CRG168P	\$S\$3,386.03
Model CR Commercial Riser w- Test&Drain - Grooved	6" (150mm)	6A180CS131	6CRG168P	\$S\$3,466.65
Model CR Commercial Riser w- Test&Drain - Grooved	8" (200mm)	6A190CS131	8CRG168P	\$S\$4,192.22
PRESSURE RELIEF KITS				
Pressure Relief Trim - 175 PSI	All Sizes	6501203550	PRT175	\$S\$ 326.73
Pressure Relief Trim - 185 PSI	All Sizes	6501203545	PRT185	\$S\$ 326.73
Pressure Relief Trim - 210 PSI	All Sizes	6501213550	PRT210	\$S\$ 326.73
Pressure Relief Trim - 260 PSI	All Sizes	6501203546	PRT260	\$S\$ 490.09
Pressure Relief Trim - 310 PSI	All Sizes	6501203547	PRT310	\$S\$ 490.09



Model FCA Floor Control Assembly with Test and Drain

- Potter Switch
- See Bulletin 619
- Grooved Component Connections for Universal Application



HV Hose Valves

- See Bulletin 444

Description	Size	Part Number	Short Code	List Price
MODEL FCA FLOOR CONTROL ASSEMBLY TEST AND DRAIN K2.8 - POTTER SWITCH				
Model FC Floor Control w- Test&Drain - Grooved	2" (50mm)	6B2000P011	2FC28P	\$S\$4,563.38
MODEL FCA FLOOR CONTROL ASSEMBLY WITH TEST & DRAIN K4.2 - POTTER SWITCH				
Model FC Floor Control w- Test&Drain - Grooved	2" (50mm)	6B2000P021	2FC42P	\$S\$4,563.38
Model FC Floor Control w- Test&Drain - Grooved	2 1/2" (66MM)	6B2500P041	25FC42P	\$S\$4,411.27
Model FC Floor Control w- Test&Drain - Grooved	3" (80mm)	6B3000P041	3FC42P	\$S\$5,171.83
MODEL FCA FLOOR CONTROL ASSEMBLY WITH TEST AND DRAIN K5.6 - POTTER SWITCH				
Model FC Floor Control w- Test&Drain - Grooved	2" (50mm)	6B2000P031	2FC56P	\$S\$4,563.38
Model FC Floor Control w- Test&Drain - Grooved	2 1/2"	6B2500P051	25FC56P	\$S\$4,411.27
Model FC Floor Control w- Test&Drain - Grooved	3"	6B3000P051	3FC56P	\$S\$5,171.83
Model FC Floor Control w- Test&Drain - Grooved	4"	6B4000P081	4FC56P	\$S\$5,171.83
MODEL FCA FLOOR CONTROL ASSEMBLY WITH TEST AND DRAIN K8.0 - POTTER SWITCH				
Model FC Floor Control w- Test&Drain - Grooved	2-1/2" (65mm)	6B2500P061	25FC80P	\$S\$4,411.27
Model FC Floor Control w- Test&Drain - Grooved	3" (80mm)	6B3000P061	3FC80P	\$S\$5,171.83
Model FC Floor Control w- Test&Drain - Grooved	4" (100mm)	6B4000P091	4FC80P	\$S\$5,171.83
MODEL FCA FLOOR CONTROL ASSEMBLY WITH TEST AND DRAIN K11.2 - POTTER SWITCH				
Model FC Floor Control w- Test&Drain - Grooved	2-1/2" (65mm)	6B2500P071	25FC112P	\$S\$4,411.27
Model FC Floor Control w- Test&Drain - Grooved	3" (80mm)	6B3000P071	3FC112P	\$S\$5,171.83
Model FC Floor Control w- Test&Drain - Grooved	4" (100mm)	6B4000P101	4FC112P	\$S\$5,171.83
MODEL FCA FLOOR CONTROL ASSEMBLY WITH TEST AND DRAIN K16.8 - POTTER SWITCH				
Model FC Floor Control w- Test&Drain - Grooved	4" (100mm)	6B4000P111	4FC168P	\$S\$5,171.83
STREAMLINE DRAIN HOSES				
RASCOFLEX,#RFDH12524TU,1.25"X2',MNPTXUN		7M99004448		\$S\$ 360.82
RASCOFLEX,#RFDH12548TU,1.25"X4',MNPTXUN		7M99004449		\$S\$ 455.04
RASCOFLEX,#RFDH248TG,2"X48",MNPTXGRV		7M99004450		\$S\$ 517.16
RASCOFLEX,#RFDH124TU,1"X2',MNPTXUNION		7M99004675		\$S\$ 331.45
RASCOFLEX,#RFDH12536TU,1.25"X3',MNPTXUN		7M99004676		\$S\$ 428.30
MODEL HV HOSE VALVES				
RASCO,#REL-HVT,1.5",FXM,HOSE VALVE	1 1/2"	7M99004574	15RAHV	\$S\$ 635.73
RASCO,#REL-HVT,2.5",FXM,HOSE VALVE	2 1/2"	7M99004576	25RAHV	\$S\$1,015.94
RASCO,#REL-HVG,2.5",GXM,HOSE VALVE	2 1/2"	7M99004578	25RAHVG	\$S\$1,088.35
MODEL HV HOSE VALVES ACCESSORIES				
RASCO,#REL-CC15,1.5",CAP+CHAIN,BRASS	1 1/2"	7M99004621	15RHVC	\$S\$ 121.20
RASCO,#REL-CC25,2.5",CAP+CHAIN,BRASS	2 1/2"	7M99004620	25RHVC	\$S\$ 152.40

Notes:

175 PSI Relief Valve Kit is provided and installed as standard equipment. Higher pressure relief valves (185, 210, 260 & 300 PSI) are available upon request.

Notes:

For 260 PSI and 310 PSI trim kits add \$100 to the list price