



**Model B-1
Accelerator**

VALVES ACCESSORIES

- See Bulletins 250, 251, 320 & 322



NITROGEN MAINTENANCE DEVICES

- NS-PaK and NS-ASAM
- See Bulletin 254

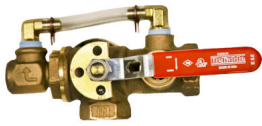
ACD Dry System Auxiliary Condensate Drain w-Sight Glass

- See Bulletin 441

Description	Part Number	Short Code	List Price
MODEL B1 ACCELERATOR			
B1 Accelerator	6301000300	AE	£1,723.55
B2 Accelerator Trim	6516000002	ACT	£ 708.72
Replacement Parts Kit - B1	6888000100	B1RPK	£ 585.55
DRY VALVE TRIM ACCESSORIES			
Fill Line- Model A (2-1/2")	6501110100	25FLTG	£ 224.29
Fill Line- Model D (4 & 6")	6501070100	4FLTG	£ 224.29
Priming Chamber	6501080100	PCG	£ 391.59
AIR MAINTENANCE DEVICE			
A Owner's Air (factory set 10psi)	6304001110	AMDA10	£1,081.93
A Owner's Air (factory set 23psi)	6304001123	AMDA23	£1,081.93
B Air Compressor Control Assembly	6304012100	AMDB	£1,229.01
PRESSURE ALARM SWITCHES			
EPS10-1 Alarm, Single SPDT (System Sensor)- Set 4-8PSI	6999991339	EPS10-1	£ 192.40
EPS10-2 Alarm, Double SPDT (System Sensor)- Set 4-8PSI	6999991212	EPS10-2	£ 223.02
EPS40-1 Supervisory, Single SPDT- Adj 10-100PSI	6999991213	EPS40-1	£ 192.40
EPS40-2 High/Low Supervisory Double SPDT- Adj 10-100PSI	6999991340	EPS40-2	£ 223.02
VALVE SEAT WRENCHES			
2-1/2" & 4" Model D Dry Pipe Valve	6881340000	W4DPV	£ 169.13
6" Model D Dry Pipe Valve	6881360000	W6DPV	£ 183.85

Description	Part Number	Short Code	List Price
NS-PAK			
NS-PaK Nitrogen Regulator System	6704030021	NSPAK	£6,829.77
NS-ASAM			
Nitrogen Maintenance Device with Pressure Switch	6704030022	NSASAM	£4,553.18
NITROGEN REGULATING DEVICE			
Nitrogen Regulating Device w/ Switch	6304030101		£1,353.10
Nitrogen Regulating Device w/o Switch	6304030100		£1,030.45

Description	Part Number	Short Code	List Price
DRY SYSTEM AUXILIARY CONDENSATE DRAIN			
ACD Dry System Auxiliary Condensate Drain w- Sight Glass	6501190000	ACD	£ 592.82



TD TEST AND DRAIN

- See Bulletin 618
- Optional Pressure Relief Kit



PRESSURE RELIEF TRIM KITS

- See Bulletin 618



A PRESSURE RELIEF VALVE

- See Bulletin 257



AAV AUTOMATIC AIR VENT

- **Stainless Steel Construction**
- **175 psi and 300 psi option**
- See Bulletin 620

Description	K-Factor	Part Number	Short Code	List Price
MODEL TD TEST AND DRAIN - THREADED				
RASCO T&D, 1", THRD, 2.8K, 300PSI, UL/FM	K2.8 (40)	7M99003865	RTD128	£ 294.28
RASCO T&D, 1", THRD, 4.2K, 300PSI, UL/FM	K4.2 (60)	7M99003866	RTD142	£ 294.28
RASCO T&D, 1", THRD, 5.6K, 300PSI, UL/FM	K5.6 (80)	7M99003867	RTD156	£ 294.28
RASCO T&D, 1.25", THRD, 2.8K, 300PSI, UL/FM	K2.8 (40)	7M99004558	RTD12528	£ 390.97
RASCO T&D, 1.25", THRD, 4.2K, 300PSI, UL/FM	K4.2 (60)	7M99003868	RTD12542	£ 390.97
RASCO T&D, 1.25", THRD, 5.6K, 300PSI, UL/FM	K5.6 (80)	7M99003869	RTD12556	£ 390.97
RASCO T&D, 1.25", THRD, 8.0K, 300PSI, UL/FM	K8.0 (115)	7M99003870	RTD12580	£ 390.97
RASCO T&D, 1.25", THRD, 11.2K, 300PSI, UL/FM	K11.2 (160)	7M99003871	RTD125112	£ 390.97
RASCO T&D, 2", THRD, 2.8K, 300PSI, UL/FM	K2.8 (40)	7M99004560	RTD228	£ 637.42
RASCO T&D, 2", THRD, 4.2K, 300PSI, UL/FM	K4.2 (60)	7M99004510	RTD242	£ 637.42
RASCO T&D, 2", THRD, 5.6K, 300PSI, UL/FM	K5.6 (80)	7M99003872	RTD256	£ 637.42
RASCO T&D, 2", THRD, 8.0K, 300PSI, UL/FM	K8 (115)	7M99003873	RTD280	£ 637.42
RASCO T&D, 2", THRD, 11.2K, 300PSI, UL/FM	K11.2 (160)	7M99003874	RTD2112	£ 637.42
RASCO T&D, 2", THRD, 16.8K, 300PSI, UL/FM	K16.8 (240)	7M99003875	RTD2168	£ 637.42
MODEL TD TEST AND DRAIN - GROOVED X THREADED				
RASCO T&D, 1.25", GXT, 2.8K, 300PSI, UL/FM	K2.8 (40)	7M99004559	RTD12528GT	£ 426.04
RASCO T&D, 1.25", GXT, 4.2K, 300PSI, UL/FM	K4.2 (60)	7M99004106	RTD12542GT	£ 426.04
RASCO T&D, 1.25", GXT, 5.6K, 300PSI, UL/FM	K5.6 (80)	7M99004107	RTD12556GT	£ 426.04
RASCO T&D, 1.25", GXT, 8.0K, 300PSI, UL/FM	K8.0 (115)	7M99004108	RTD12580GT	£ 426.04
RASCO T&D, 1.25", GXT, 11.2K, 300PSI, UL/FM	K11.2 (160)	7M99004109	RTD125112GT	£ 426.04
RASCO T&D, 2", GXT, 2.8K, 300PSI, UL/FM	K2.8 (40)	7M99004561	RTD228GT	£ 694.61
RASCO T&D, 2", GXT, 4.2K, 300PSI, UL/FM	K4.2 (60)	7M99004540	RTD242GT	£ 694.61
RASCO T&D, 2", GXT, 5.6K, 300PSI, UL/FM	K5.6 (80)	7M99004110	RTD256GT	£ 694.61
RASCO T&D, 2", GXT, 8.0K, 300PSI, UL/FM	K8.0 (115)	7M99004111	RTD280GT	£ 694.61
RASCO T&D, 2", GXT, 11.2K, 300PSI, UL/FM	K11.2 (160)	7M99004112	RTD2112GT	£ 694.61
RASCO T&D, 2", GXT, 16.8K, 300PSI, UL/FM	K16.8 (240)	7M99004113	RTD2168GT	£ 694.61

Description	Part Number	Short Code	List Price
MODEL A PRESSURE RELIEF VALVE - NPT			
MOD A 175 PSI PRESSURE RELIEF VLV 1/2NPT	6501000001	PRV175	£ 81.06
A Pressure Relief Valve, 185 psi, ½ NPT	6501000002	PRV185	£ 81.06
A Pressure Relief Valve, 210 psi, ½ NPT	6501000003	PRV210	£ 121.59
A Pressure Relief Valve, 260 psi, ½ NPT	6501000004	PRV260	£ 121.59
A Pressure Relief Valve, 310 psi, ½ NPT	6501000005	PRV310	£ 121.59
MODEL A PRESSURE RELIEF VALVE - BSPT			
MOD A 175PSI PRESSURE RELIEF VLV 1/2BSPT	6501000006		£ 81.06
MOD A PRESSURE RELIEF VLV 185PSI 1/2BSPT	6501000007		£ 81.06
MOD A 210PSI PRESSURE RELIEF VLV 1/2BSPT	6501000008		£ 121.59
MOD A 260PSI PRESSURE RELIEF VLV 1/2BSPT	6501000009		£ 121.59
MOD A 310PSI PRESSURE RELIEF VLV 1/2BSPT	6501000010		£ 121.59
MODEL AAV AUTOMATIC AIR VENT			
AAV-S,AUTOMATIC AIR VENT, 175 PSI	6301600000	AAV175	£1,472.73
AAV-S,AUTOMATIC AIR VENT, 300 PSI	6301600001	AAV300	£3,109.09

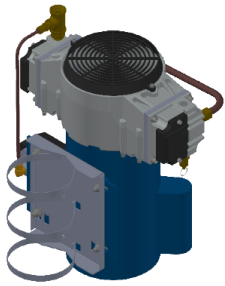
Description	Part Number	Short Code	List Price
PRESSURE RELIEF TRIM KITS			
Pressure Relief Kit - 175 psi	6501203550	PRT175	£ 175.74
Pressure Relief Kit - 185 psi	6501203545	PRT185	£ 175.74
Pressure Relief Kit - 210 psi	6501213550	PRT210	£ 175.74
Pressure Relief Kit - 260 psi	6501203546	PRT260	£ 263.61
Pressure Relief Kit - 310 psi	6501203547	PRT310	£ 263.61



QRM RISER & TANK MOUNTED AIR COMPRESSORS

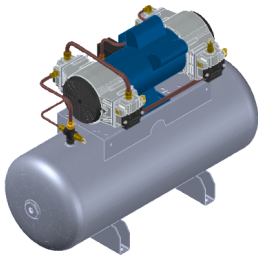
- See Bulletin 256

Description	Part Number	Short Code	List Price
QRM2 AIR COMPRESSORS - TANKLESS w/CHECK VALVE & PRESSURE SWITCH			
RASCO AIR,QRM2-25115 1/4HP,115,TANKLESS	6872000001	14QRM	£ 2,114.60
RASCO AIR,QRM2-25220 1/4HP,220,TANKLESS	6872000002	14QRM220	£ 2,333.18
RASCO AIR,QRM2-50115 1/2HP,115,TANKLESS	6872000005	12QRM	£ 2,921.13
RASCO AIR,QRM2-50220 1/2HP,220,TANKLESS	6872000006	12QRM220	£ 3,047.36
RASCO AIR,QRM2-25220-50HZ,1/4,220,TNKLSS	6872000011	14QRM50	£ 2,333.18
RASCOAIR,QRM2-50220-50HZ,1/2,220,TNKLSS	6872000013	12QRM50	£ 3,047.36
RASCO AIR,QRM2-25115-4050 1/4HP,115,TL	6872000040	14QRM4050	£ 2,152.73
RASCO AIR,QRM2-50115-4050 1/2HP,115,TL	6872000042	12QRM4050	£ 2,921.13
RASCO AIR,QRM2-25220-4050 1/4HP,220,TL	6872000041	14QRM2204050	£ 2,333.18
RASCO AIR,QRM2-50220-4050 1/2HP,220,TL	6872000043	12QRM2204050	£ 3,047.36
QRM2 AIR COMPRESSORS - TANK MOUNTED			
RASCO AIR,QRM2-25115T 1/4HP,115,TANK	6872000003	14QRMT	£ 2,655.96
RASCO AIR,QRM2-25220T 1/4HP,220,TANK	6872000004	14QRM220T	£ 2,894.87
RASCO AIR,QRM2-50115T 1/2HP,115,TANK	6872000007	12QRMT	£ 3,376.92
RASCO AIR,QRM2-50220T 1/2HP,220,TANK	6872000008	12QRM220T	£ 3,520.95
RASCO AIR,QRM2-100115T,1 HP,115,TANK	6872000009	1QRMT	£ 4,468.11
RASCO AIR,QRM2-100220T,1 HP,220,TANK	6872000010	1QRM220T	£ 4,745.99
RASCO AIR,QRM2-25220T-50HZ,1/4,220,TANK	6872000012	14QRM50T	£ 2,894.87
RASCO AIR,QRM2-50220T-50HZ,1/2,220,TANK	6872000014	12QRM50T	£ 3,520.95
RASCO AIR,QRM2-100220T-50HZ,1,220,TANK	6872000015	1QRM50T	£ 4,745.99
CONNECTION KITS			
CONNECTION KIT, TANKLESS COMPRESSOR	650120011G	CKTL	£ 415.97
CONNECTION KIT, TANK MOUNTED COMPRESSOR	650120011H	CKTM	£ 1,002.23
FLEX HOSE ONLY			
FLEX HOSE, STAINLESS STEEL, 1/2" x 30"	6872000000	QRMFLEX	£ 154.19



RRM RISER MOUNTED AIR COMPRESSOR

- See Bulletin 258



RTM TANK MOUNTED AIR COMPRESSOR

- See Bulletin 258

Description	Part Number	Short Code	List Price
RRM AIR COMPRESSORS - RISER MOUNTED			
RASCO AIR,RRM23016-2026,1/6HP,115/220VAC	6872000020	16RRM	£2,106.13
RASCO AIR,RRM40033-2026,1/3HP,115/220VAC	6872000021	13RRM	£2,566.16
RASCO AIR,RRM70050-2026,1/2HP,115/220VAC	6872000022	12RRM	£3,356.59
RASCO AIR,RRM23016-4050 1/6HP,115,CP	6872000044	16RRM4050	£2,105.28
RASCO AIR,RRM40033-4050 1/3HP,115,CP	6872000045	13RRM4050	£2,562.77
RASCO AIR,RRM70050-4050 1/2HP,115,CP	6872000046	12RRM4050	£3,346.42
RTM AIR COMPRESSORS - TANK MOUNTED			
RASCO AIR,RTM25033-80100,1/3HP,115/220VA	6872000023	13RTM	£4,235.98
RASCO AIR,RTM36575-80100,3/4HP,115/220VA	6872000024	34RTM	£5,422.06
RASCO AIR,RTM550100-80100,1HP,115/220VAC	6872000025	1RTM	£6,777.57
RASCO AIR,RTM915150-80100,1-1/2HP 115/22	6872000026	112RTM	£8,641.40
RASCO AIR,RTM1100200-80100 2HP,115/220VA	6872000027	2RTM	£9,996.91
CONNECTION KITS			
Connection Kit, Tankless Compressor	650120011G	CKTL	£ 415.97
Connection Kit, Tank Mounted Compressor	650120011H	CKTM	£1,002.23
FLEX HOSE -- SOLD SEPARATELY			
Flex Hose, Stainless Steel, 1/2" x 30"	6872000000	QRMFLEX	£ 154.19

Features

- Three riser mount tank-less options (RRM)
- Five tank mounted options (RTM)
- Quiet oil-less piston compressors
- UL Listed pressure switch
- Flexile connection kits

Notes:

1. Models 16RRM, 13RRM, and 12RRM are preset at 20 psi start/26 psi stop for use with low pressure systems such as the Model DDX-LP and Model EX.
2. Models 16RRM4050, 13RRM4050, and 12RRM4050 are preset at 40 psi start/50 psi stop for use with conventional differential valves such as the Model FX and Model D.

AIR COMPRESSORS



Description	Part Number	Short Code	List Price
GAST AIR COMPRESSORS -- BARE			
1/6 HP, 115-60-1, Gast 1LAA-10-M100X	6999990904	16A	£ 1,009.05
1/4 HP, 115-60-1, Gast 2LAF-10-M200X	6999991538	14A	£ 1,204.56
1/3 HP, 115-60-1, Gast 3LBA-33-M300X	6702000033	13A	£ 1,456.83
1/2 HP, 115-60-1, Gast 4LCB-10-M450X	6999991518	12A	£ 1,784.79
3/4 HP, 115/230-60-1, Gast 5LCA-23-550NGX	6702000075	34A	£ 1,856.26
1 HP, 115/230-60-1, Gast 6LCF-10-M616X	6999991315	1A	£ 2,392.38
1-1/2 HP, 115/230-60-1, Gast 7LDE-10-M700X	6702000150	112A	£ 4,015.34
2 HP, 115/230-60-1, Gast 8LDF-10-M850X	6999991569	2A	£ 4,940.34
GAST AIR COMPRESSORS WITH CHECK VALVE AND PRESSURE SWITCH			
1/6 HP, 115-60-1, Gast 1LAA-32-M100X	6999991173	16PA	£ 1,595.58
1/4 HP, 115-60-1, Gast 2LAF-12-M200X	6999990905	14PA	£ 1,667.06
1/3 HP, 115-60-1, Gast 3LBA-32-M300X	6999990906	13PA	£ 1,843.65
1/2 HP, 115-60-1, Gast 4LCB-21-M450X	6999990907	12PA	£ 2,207.38
3/4 HP, 115/230-60-1, Gast 5LCA-22-M550X	6999990908	34PA	£ 2,392.38
1 HP, 115/230-60-1, Gast 6LCF-13-M616X	6999990909	1PA	£ 2,838.07
1-1/2 HP, 115/230-60-1, Gast 7LDE-16-M750X	6999990910	112PA	£ 4,351.70
2 HP, 115/230-60-1, Gast 8LDF-16-M850X	6999991325	2PA	£ 5,613.06
GAST AIR COMPRESSORS -- TANK MOUNTED			
1/6 HP, 115-60-1, Gast 1HAB-11T-M100X, 2 GAL	6999991027	16TA	£ 2,333.52
1/4 HP, 115-60-1, Gast 2LAF-11T-M200X, 12 GAL	6999991163	14TA	£ 3,233.29
1/3 HP, 115-60-1, Gast 3LBA-11T-M300AX 12 GAL	6999991285	13TA	£ 3,653.75
1/2 HP, 115-60-1, Gast 4LCB-11T-M450X, 20 GAL	6999991136	12TA	£ 4,015.34
3/4 HP, 115/230-60-1, Gast 5LCA-11T-M550X, 20 GAL	6999991217	34TA	£ 4,116.25
1 HP, 115/230-60-1, Gast 6LCF-11T-M616X, 30 GAL	6999991289	1TA	£ 5,024.43
1-1/2 HP, 115/230-60-1, Gast 7LDE-11T-M750X, 30 GAL	6999991567	112TA	£ 7,463.06
2 HP, 115/230-60-1, Gast 8LDF-11TC-M850X, 30GAL	6999991541	2TA	£ 10,111.92
GAST AIR COMPRESSORS -- REPAIR KITS *			
3/4 HP, Repair Kit	6888000020	K263	£ 332.12
1-1/2 HP, Repair Kit	6888000030	K303	£ 533.93
Riser Mounting Brackets #AT670	6999990969	GMB	£ 140.81
Riser Mounting Brackets #AT670A	6990007698	GMBL	£ 302.68

*Repair Kit Contains: Gaskets, Piston, Seals, Piston Rings, In/Out Valve Plates, Manifold Seals and Felts (for Filters)



Description	System Capacity	Part Number	Short Code	List Price
C-AIRE HEAVY DUTY - SINGLE PHASE - TANK MOUNTED				
S175-HD1-115 (115V, 1HP, 3 GALLON)	175 gallons	6990012386	C175	£2,685.42
S265H-HD1-115 (115V, 1-1/2 HP, 3 GALLON)	265 gallons	6990012600	C265	£2,734.98
S325H-HD1-115 (115V, 1-1/2 HP, 3 GALLON)	325 gallons	6990012601	C325	£2,805.30
S500H-HD1-115 (115V, 1-1/2 HP, 30 GALLON)	500 gallons	6990012602	C500	£4,234.85
S750H-HD1-230 (3HP,230V,30 GALLON H)	750 gallons	6990013997	C750	£4,834.38
S900H-HD1-230 (5HP,230V,30 GALLON H)	900 gallons	6990013998	C900	£4,943.94
S1300H-HD1-230S (5HP,230V,60 GALLON H)	1300 gallons	6990013999	C1300	£8,353.98
S1700H-HD1-230S (7.5HP,230V,60 GALLON H)	1700 gallons	6990014000	C1700	£8,834.09
C-AIRE STANDARD DUTY - SINGLE PHASE - TANK MOUNTED				
S300H-SD1-115 (1HP,115V,3 GALLON H)	300 gallons	6990013994	C300	£2,282.60
S2000H-SD1-230S (7.5HP,230V,60 GALLON H)	2000 gallons			£ Call

VALVE ACCESSORIES

- Additional Sprinkler and Valve Signs available upon request

Description	Part Number	Short Code	List Price
PRESSURE GAUGES			
GAUGE,WATER,0-300,1/4	98248001	WATER	£ 78.79
GAUGE,AIR,0-80,1/4NPT	98248000	AIR	£ 84.24
GAUGE,AIR,58 OZ,1/4NPT	98248002	AIRO	£ 298.39
INSPECTORS TEST CONNECTIONS			
Sight Test Type (Model B)	6851010000	ISC	£ 325.41
Blind Test Type (Model A)	6851020000	IBC	£ 108.47
AUTOMATIC BALL DRIPS			
1/2,BALL DRIP VALVE,AUTO	78653500	5ABD	£ 188.73
3/4,BALL DRIP VALVE,AUTO,MOD C	78653700	75ABD	£ 215.65
MECHANICAL BALL DRIPS			
BALL DRIP VALVE 1/2" MECHANICAL MOD. C	78653100	5MBD	£ 336.90
1/2,BALL DRIP VALVE,MECH,MOD D	78653800		£ 215.65
STRAINER			
3/4" NPT (Female)	78650200	34ST	£ 198.00
MISCELLANEOUS			
Model C Sight Drain 2" NPT (Female)	6863000000	2ISC	£ 352.98
Model B Drum Drip Only 3/4" NPT (Female)	71010448		£ 216.38
Model A Fill Cup 1/2" NPT (Female)	75000050	5FC	£ 102.13
Model A Fill Cup 3/4" NPT (Female)	75000075	75FC	£ 115.55
Model A Control Valve Seal Only	6869800000		£ 28.23
SIGNS—MODEL A			
Valve Control Sign	6892011000	VCS	£ 13.02
SIGNS—MODEL B			
Inspector Test Sign	6892110000	ITS	£ 2.53
Open Sprinkler Control Sign	6892030000	OSCS	£ 2.71
Open Sprinkler Drain Sign	6892040000	OSDS	£ 2.71
Test Valve Sign	6892050000	TVS	£ 2.71
Water Motor Line Sign	6892060000	WMLS	£ 2.71
Auxiliary Drain Sign	6892070000	ADS	£ 2.53
Main Drain Sign	6892080000	MDS	£ 2.53
Drain Sign	6892090000	DS	£ 2.44
Alarm Test Sign	6892100000	ATS	£ 2.71
SIGNS—MODEL C			
Cold Weather Sign	6892010000	CWS	£ 9.09
SIGNS—MODEL D			
Fire Alarm Sign	6892020000	FAS	£ 13.02
SIGNS—MODEL E			
Hydraulically Calculated System	6892120000	HCS	£ 7.14

Notes:

*PERSONALIZED PRESSURE GAUGES ARE AVAILABLE UPON REQUEST. PLEASE CONTACT OUR CUSTOMER SERVICE DEPARTMENT FOR MORE INFORMATION.



RESIDENTIAL RISERS

- GROOVED END
- See Bulletin 425
- WITH POTTER SWITCHES

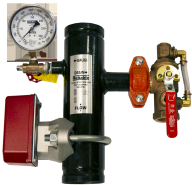
RESIDENTIAL RISERS

- THREADED MALE NPT 1" (25)
- See Bulletin 425
- WITH POTTER SWITCHES

Description	Size	Part Number	Short Code	List Price
RESIDENTIAL RISER WITH THREAD FEMALE NPT 1" (25) - POTTER				
1" RES RISER ASSEMBLY,POTTER		6A000RP000	1RRNP	£1,008.70
1 1/2" RES RISER ASSEMBLY,POTTER		6A030RP000	15RRNP	£1,008.70
2" RES RISER ASSEMBLY,POTTER		6A060RP000	2RRNP	£1,107.96
RESIDENTIAL RISER WITH THREADED MALE NPT 1"(25)- POTTER				
1" Res Riser Assembly MNPT		6A020RP000		£1,022.73
RESIDENTIAL RISER WITH PRESSURE RELIEF VALVE MALE NPT 1" (25)-POTTER				
1" RES RISER ASSBLY MNPT W/PRV 175 PTR R		6A020RP001		£1,472.73
1" RES RISER ASSBLY MNPT W/PRV 185 PTR R		6A020RP002		£1,472.73
RESIDENTIAL RISER WITH TEST & DRAIN MALE NPT 1" (25) POTTER				
1" RES RISER MNPT W/2.8 TD PTR R MTO		6A020RP010		£1,554.54
1" RES RISER MNPT W/4.2 TD PTR R		6A020RP020		£1,554.54
1" RES RISER MNPT W/5.6 TD PTR R		6A020RP030		£1,554.54
RESIDENTIAL RISER WITH TEST & DRAIN, PRV 175& 185 PSI MALE NPT 1" POTTER				
1" RES RISER MNPT W/2.8 TD PRV 175 PTR R		6A020RP011		£1,718.18
1" RES RISER MNPT W/2.8 TD PRV 185 PTR R		6A020RP012		£1,718.18
1" RES RISER MNPT W/4.2 TD PRV 175 PTR R		6A020RP021		£1,718.18
1" RES RISER MNPT W/4.2 TD PRV 185 PTR R		6A020RP022		£1,718.18
1" RES RISER MNPT W/5.6 TD PRV 175 PTR R		6A020RP031		£1,718.18
1" RES RISER MNPT W/5.6 TD PRV 185 PTR R		6A020RP032		£1,718.18
RESIDENTIAL RISER GROOVED END POTTER				
1 1/2" RES RISER ASSEMBLY GE PTR N		6A050RP000		£1,022.73
RESIDENTIAL RISER GROOVED END WITH PRESSURE RELIEF VALVE POTTER				
1 1/2" RES RISER GE PRV 175 PTR R		6A050RP001		£1,472.73
1 1/2" RES RISER GE PRV 185 PTR R		6A050RP002		£1,472.73
RESIDENTIAL RISER GROOVED END WITH TEST& DRAIN POTTER				
1 1/2" RES RISER ASSY GE W/2.8K TD PTR R		6A050RP010		£1,554.54
1 1/2" RES RISER ASSY GE W/4.2K TD PTR R		6A050RP020		£1,554.54
1 1/2" RES RISER GE W/5.6K TD PTR		6A050RP030		£1,554.54
RESIDENTIAL RISER GE WITH TEST & DRAIN,PRV 175& 185 PSI POTTER				
1 1/2" RES RISER GE W/2.8K TD PRV175 P R		6A050RP011		£1,718.18
1 1/2" RES RISER GE W/2.8K TD PRV185 P R		6A050RP012		£1,718.18
1 1/2" RESRISER GE W/4.2 TD PRV175 PTR R		6A050RP021		£1,718.18
1 1/2" RESRISER GE W/4.2 TD PRV185 PTR R		6A050RP022		£1,718.18
1 1/2" RESRISER GE W/5.6 TD PRV175 PTR R		6A050RP031		£1,718.18
1 1/2" RESRISER GE W/5.6 TD PRV185 PTR R		6A050RP032		£1,718.18

Model CR Commercial Riser For Commercial Applications

- For Commercial Applications
- See Bulletin 621
- **With Potter Switch**



Model CR Commercial Riser with Test & Drain

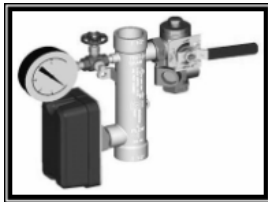
- For Commercial Applications
- See Bulletin 621
- **With Potter Switch**

Description	Size	Part Number	Short Code	List Price
MODEL CR COMMERCIAL RISER WITH BASIC TRIM-POTTER SWITCH				
Model CR Commercial Riser - Threaded	1-1/2" (40mm)	6A080CP000	15CRBPE	£1,082.90
Model CR Commercial Riser - Threaded	2" (50mm)	6A090CP000	2CRBPE	£1,246.53
Model CR Commercial Riser - Grooved	2" (50mm)	6A100CP000	2CRGBPE	£1,082.90
Model CR Commercial Riser - Grooved	2-1/2" (65mm)	6A120CP010	25CRGBPE	£1,189.15
Model CR Commercial Riser - Grooved	3" (80mm)	6A140CP010	3CRGBPE	£1,237.38
Model CR Commercial Riser - Grooved	4" (100mm)	6A160CP020	4CRGBPE	£1,469.31
Model CR Commercial Riser - Grooved	6" (150mm)	6A180CP020	6CRGBPE	£1,604.57
Model CR Commercial Riser - Grooved	8" (200mm)	6A190CP020	8CRGBPE	£1,759.12
MODEL CR COMMERCIAL RISER WITH TEST & DRAIN 2.8K-POTTER SWITCH				
Model CR Commercial Riser w- Test&Drain - Threaded	1-1/2" (40mm)	6A080CP030	15CR28PE	£1,239.54
Model CR Commercial Riser w- Test&Drain - Threaded	2" (50mm)	6A090CP030	2CR28PE	£1,239.54
Model CR Commercial Riser w- Test&Drain - Grooved	2" (50mm)	6A100CP030	2CRG28PE	£1,196.18
MODEL CR COMMERCIAL RISER WITH TEST & DRAIN 4.2K-POTTER SWITCH				
Model CR Commercial Riser w- Test&Drain - Threaded	1-1/2" (40mm)	6A080CP040	15CR42PE	£1,239.54
Model CR Commercial Riser w- Test&Drain - Threaded	2" (50mm)	6A090CP040	2CR42PE	£1,239.54
Model CR Commercial Riser w- Test&Drain - Grooved	2" (50mm)	6A100CP040	2CRG42PE	£1,196.18
Model CR Commercial Riser w- Test&Drain - Grooved	2-1/2" (65mm)	6A120CP060	25CRG42PE	£1,369.63
Model CR Commercial Riser w- Test&Drain - Grooved	3" (80mm)	6A140CP060	3CRG42PE	£1,369.63
MODEL CR COMMERCIAL RISER WITH TEST & DRAIN 5.6K-POTTER SWITCH				
Model CR Commercial Riser w- Test&Drain - Threaded	1-1/2" (40mm)	6A080CP050	15CR56PE	£1,239.54
Model CR Commercial Riser w- Test&Drain - Threaded	2" (50mm)	6A090CP050	2CR56PE	£1,239.54
Model CR Commercial Riser w- Test&Drain - Grooved	2" (50mm)	6A100CP050	2CRG56PE	£1,196.18
Model CR Commercial Riser w- Test&Drain - Grooved	2-1/2" (65mm)	6A120CP070	25CRG56PE	£1,369.63
Model CR Commercial Riser w- Test&Drain - Grooved	3" (80mm)	6A140CP070	3CRG56PE	£1,369.63
Model CR Commercial Riser w- Test&Drain - Grooved	4" (100mm)	6A160CP100	4CRG56PE	£1,716.54
Model CR Commercial Riser w- Test&Drain - Grooved	6" (150mm)	6A180CP100	6CRG56PE	£1,759.91
Model CR Commercial Riser w- Test&Drain - Grooved	8" (200mm)	6A190CP100	8CRG56PE	£2,150.18
MODEL CR COMMERCIAL RISER WITH TEST & DRAIN 8.0K-POTTER SWITCH				
Model CR Commercial Riser w- Test&Drain - Grooved	2-1/2" (65mm)	6A120CP080	25CRG80PE	£1,369.63
Model CR Commercial Riser w- Test&Drain - Grooved	3" (80mm)	6A140CP080	3CRG80PE	£1,369.63
Model CR Commercial Riser w- Test&Drain - Grooved	4" (100mm)	6A160CP110	4CRG80PE	£1,716.54
Model CR Commercial Riser w- Test&Drain - Grooved	6" (150mm)	6A180CP110	6CRG80PE	£1,759.91
Model CR Commercial Riser w- Test&Drain - Grooved	8" (200mm)	6A190CP110	8CRG80PE	£2,150.18
MODEL CR COMMERCIAL RISER WITH TEST & DRAIN 11.2K-POTTER SWITCH				
Model CR Commercial Riser w- Test&Drain - Grooved	2-1/2" (65mm)	6A120CP090	25CRG112PE	£1,369.63
Model CR Commercial Riser w- Test&Drain - Grooved	3" (80mm)	6A140CP090	3CRG112PE	£1,369.63
Model CR Commercial Riser w- Test&Drain - Grooved	4" (100mm)	6A160CP120	4CRG112PE	£1,716.54
Model CR Commercial Riser w- Test&Drain - Grooved	6" (150mm)	6A180CP120	6CRG112PE	£1,759.91
Model CR Commercial Riser w- Test&Drain - Grooved	8" (200mm)	6A190CP120	8CRG112PE	£2,150.18
MODEL CR COMMERCIAL RISER WITH TEST & DRAIN 16.8K-POTTER SWITCH				
Model CR Commercial Riser w- Test&Drain - Grooved	4" (100mm)	6A160CP130	4CRG168PE	£1,716.54
Model CR Commercial Riser w- Test&Drain - Grooved	6" (150mm)	6A180CP130	6CRG168PE	£1,759.91
Model CR Commercial Riser w- Test&Drain - Grooved	8" (200mm)	6A190CP130	8CRG168PE	£2,150.18
PRESSURE RELIEF KITS				
Pressure Relief Trim - 175 PSI	All Sizes	6501203550	PRT175	£ 175.74
Pressure Relief Trim - 185 PSI	All Sizes	6501203545	PRT185	£ 175.74
Pressure Relief Trim - 210 PSI	All Sizes	6501213550	PRT210	£ 175.74
Pressure Relief Trim - 260 PSI	All Sizes	6501203546	PRT260	£ 263.61
Pressure Relief Trim - 310 PSI	All Sizes	6501203547	PRT310	£ 263.61



Model CR Commercial Riser & PRV

- For Commercial Applications
- See Bulletin 621



Model CR Commercial Riser with Test & Drain & PRV

- For Commercial Applications
- See Bulletin 621
- **Items listed are with the 175 Pressure Relief Valve**

Description	Size	Part Number	Short Code	List Price
MODEL CR COMMERCIAL RISER WITH BASIC TRIM & PRV 175 PSI				
Model CR Commercial Riser - Threaded	1-1/2" (40mm)	6A080CS001	15CRBP	£ 1,187.62
Model CR Commercial Riser - Threaded	2" (50mm)	6A090CS001	2CRBP	£ 1,187.62
Model CR Commercial Riser - Grooved	2" (50mm)	6A100CS001	2CRGBP	£ 1,187.62
Model CR Commercial Riser - Grooved	2-1/2" (65mm)	6A120CS011	25CRGBP	£ 1,293.88
Model CR Commercial Riser - Grooved	3" (80mm)	6A140CS011	3CRGBP	£ 1,342.10
Model CR Commercial Riser - Grooved	4" (100mm)	6A160CS021	4CRGBP	£ 1,574.04
Model CR Commercial Riser - Grooved	6" (150mm)	6A180CS021	6CRGBP	£ 1,709.29
Model CR Commercial Riser - Grooved	8" (200mm)	6A190CS021	8CRGBP	£ 1,863.85
MODEL CR COMMERCIAL RISER WITH TEST & DRAIN & PRV K2.8 175 PSI				
Model CR Commercial Riser w- Test&Drain - Threaded	1-1/2" (40mm)	6A080CS031	15CR28P	£ 1,344.27
Model CR Commercial Riser w- Test&Drain - Threaded	2" (50mm)	6A090CS031	2CR28P	£ 1,344.27
Model CR Commercial Riser w- Test&Drain - Grooved	2" (50mm)	6A100CS031	2CRG28P	£ 1,300.91
MODEL CR COMMERCIAL RISER WITH TEST & DRAIN & PRV K4.2 175 PSI				
Model CR Commercial Riser w- Test&Drain - Threaded	1-1/2" (40mm)	6A080CS041	15CR42P	£ 1,344.27
Model CR Commercial Riser w- Test&Drain - Threaded	2" (50mm)	6A090CS041	2CR42P	£ 1,344.27
Model CR Commercial Riser w- Test&Drain - Grooved	2" (50mm)	6A100CS041	2CRG42P	£ 1,300.91
Model CR Commercial Riser w- Test&Drain - Grooved	2-1/2" (65mm)	6A120CS061	25CRG42P	£ 1,474.36
Model CR Commercial Riser w- Test&Drain - Grooved	3" (80mm)	6A140CS061	3CRG42P	£ 1,474.36
MODEL CR COMMERCIAL RISER WITH TEST & DRAIN & PRV K5.6 175 PSI				
Model CR Commercial Riser w- Test&Drain - Threaded	1-1/2" (40mm)	6A080CS051	15CR56P	£ 1,344.27
Model CR Commercial Riser w- Test&Drain - Threaded	2" (50mm)	6A090CS051	2CR56P	£ 1,344.27
Model CR Commercial Riser w- Test&Drain - Grooved	2" (50mm)	6A100CS051	2CRG56P	£ 1,300.91
Model CR Commercial Riser w- Test&Drain - Grooved	2-1/2" (65mm)	6A120CS071	25CRG56P	£ 1,474.36
Model CR Commercial Riser w- Test&Drain - Grooved	3" (80mm)	6A140CS071	3CRG56P	£ 1,474.36
Model CR Commercial Riser w- Test&Drain - Grooved	4" (100mm)	6A160CS101	4CRG56P	£ 1,976.73
Model CR Commercial Riser w- Test&Drain - Grooved	6" (150mm)	6A180CS101	6CRG56P	£ 2,068.60
Model CR Commercial Riser w- Test&Drain - Grooved	8" (200mm)			£ Call
MODEL CR COMMERCIAL RISER WITH TEST & DRAIN & PRV K8.0 175 PSI				
Model CR Commercial Riser w- Test&Drain - Grooved	2-1/2" (65mm)	6A120CS081	25CRG80P	£ 1,474.36
Model CR Commercial Riser w- Test&Drain - Grooved	3" (80mm)	6A140CS081	3CRG80P	£ 1,474.36
Model CR Commercial Riser w- Test&Drain - Grooved	4" (100mm)	6A160CS111	4CRG80P	£ 1,821.27
Model CR Commercial Riser w- Test&Drain - Grooved	6" (150mm)	6A180CS111	6CRG80P	£ 1,864.63
Model CR Commercial Riser w- Test&Drain - Grooved	8" (200mm)	6A190CS111	8CRG80P	£ 2,254.91
MODEL CR COMMERCIAL RISER WITH TEST & DRAIN & PRV K11.2 175 PSI				
Model CR Commercial Riser w- Test&Drain - Grooved	2-1/2" (65mm)	6A120CS091	25CRG112P	£ 1,474.36
Model CR Commercial Riser w- Test&Drain - Grooved	3" (80mm)	6A140CS091	3CRG112P	£ 1,474.36
Model CR Commercial Riser w- Test&Drain - Grooved	4" (100mm)	6A160CS121	4CRG112P	£ 1,821.27
Model CR Commercial Riser w- Test&Drain - Grooved	6" (150mm)	6A180CS121	6CRG112P	£ 1,864.63
Model CR Commercial Riser w- Test&Drain - Grooved	8" (200mm)	6A190CS121	8CRG112P	£ 2,254.91
MODEL CR COMMERCIAL RISER WITH TEST & DRAIN & PRV K16.8 175 PSI				
Model CR Commercial Riser w- Test&Drain - Grooved	4" (100mm)	6A160CS131	4CRG168P	£ 1,821.27
Model CR Commercial Riser w- Test&Drain - Grooved	6" (150mm)	6A180CS131	6CRG168P	£ 1,864.63
Model CR Commercial Riser w- Test&Drain - Grooved	8" (200mm)	6A190CS131	8CRG168P	£ 2,254.91
PRESSURE RELIEF KITS				
Pressure Relief Trim - 175 PSI	All Sizes	6501203550	PRT175	£ 175.74
Pressure Relief Trim - 185 PSI	All Sizes	6501203545	PRT185	£ 175.74
Pressure Relief Trim - 210 PSI	All Sizes	6501213550	PRT210	£ 175.74
Pressure Relief Trim - 260 PSI	All Sizes	6501203546	PRT260	£ 263.61
Pressure Relief Trim - 310 PSI	All Sizes	6501203547	PRT310	£ 263.61



Model FCA Floor Control Assembly with Test and Drain

- Potter Switch
- See Bulletin 619
- Grooved Component Connections for Universal Application



HV Hose Valves

- See Bulletin 444

Description	Size	Part Number	Short Code	List Price
MODEL FCA FLOOR CONTROL ASSEMBLY TEST AND DRAIN K2.8 - POTTER SWITCH				
Model FC Floor Control w- Test&Drain - Grooved	2" (50mm)	6B2000P011	2FC28P	£2,454.54
MODEL FCA FLOOR CONTROL ASSEMBLY WITH TEST & DRAIN K4.2 - POTTER SWITCH				
Model FC Floor Control w- Test&Drain - Grooved	2" (50mm)	6B2000P021	2FC42P	£2,454.54
Model FC Floor Control w- Test&Drain - Grooved	2 1/2" (66MM)	6B2500P041	25FC42P	£2,372.72
Model FC Floor Control w- Test&Drain - Grooved	3" (80mm)	6B3000P041	3FC42P	£2,781.82
MODEL FCA FLOOR CONTROL ASSEMBLY WITH TEST AND DRAIN K5.6 - POTTER SWITCH				
Model FC Floor Control w- Test&Drain - Grooved	2" (50mm)	6B2000P031	2FC56P	£2,454.54
Model FC Floor Control w- Test&Drain - Grooved	2 1/2"	6B2500P051	25FC56P	£2,372.72
Model FC Floor Control w- Test&Drain - Grooved	3"	6B3000P051	3FC56P	£2,781.82
Model FC Floor Control w- Test&Drain - Grooved	4"	6B4000P081	4FC56P	£2,781.82
MODEL FCA FLOOR CONTROL ASSEMBLY WITH TEST AND DRAIN K8.0 - POTTER SWITCH				
Model FC Floor Control w- Test&Drain - Grooved	2-1/2" (65mm)	6B2500P061	25FC80P	£2,372.72
Model FC Floor Control w- Test&Drain - Grooved	3" (80mm)	6B3000P061	3FC80P	£2,781.82
Model FC Floor Control w- Test&Drain - Grooved	4" (100mm)	6B4000P091	4FC80P	£2,781.82
MODEL FCA FLOOR CONTROL ASSEMBLY WITH TEST AND DRAIN K11.2 - POTTER SWITCH				
Model FC Floor Control w- Test&Drain - Grooved	2-1/2" (65mm)	6B2500P071	25FC112P	£2,372.72
Model FC Floor Control w- Test&Drain - Grooved	3" (80mm)	6B3000P071	3FC112P	£2,781.82
Model FC Floor Control w- Test&Drain - Grooved	4" (100mm)	6B4000P101	4FC112P	£2,781.82
MODEL FCA FLOOR CONTROL ASSEMBLY WITH TEST AND DRAIN K16.8 - POTTER SWITCH				
Model FC Floor Control w- Test&Drain - Grooved	4" (100mm)	6B4000P111	4FC168P	£2,781.82
STREAMLINE DRAIN HOSES				
RASCOFLEX,#RFDH12524TU,1.25"X2',MNPTXUN		7M99004448		£ 194.08
RASCOFLEX,#RFDH12548TU,1.25"X4',MNPTXUN		7M99004449		£ 244.76
RASCOFLEX,#RFDH248TG,2"X48",MNPTXGRV		7M99004450		£ 278.17
RASCOFLEX,#RFDH124TU,1"X2',MNPTXUNION		7M99004675		£ 178.28
RASCOFLEX,#RFDH12536TU,1.25"X3',MNPTXUN		7M99004676		£ 230.37
MODEL HV HOSE VALVES				
RASCO,#REL-HVT,1.5",FXM,HOSE VALVE	1 1/2"	7M99004574	15RAHV	£ 341.95
RASCO,#REL-HVT,2.5",FXM,HOSE VALVE	2 1/2"	7M99004576	25RAHV	£ 546.45
RASCO,#REL-HVG,2.5",GXM,HOSE VALVE	2 1/2"	7M99004578	25RAHVG	£ 585.40
MODEL HV HOSE VALVES ACCESSORIES				
RASCO,#REL-CC15,1.5",CAP+CHAIN,BRASS	1 1/2"	7M99004621	15RHVC	£ 65.19
RASCO,#REL-CC25,2.5",CAP+CHAIN,BRASS	2 1/2"	7M99004620	25RHVC	£ 81.97

Notes:

175 PSI Relief Valve Kit is provided and installed as standard equipment. Higher pressure relief valves (185, 210, 260 & 300 PSI) are available upon request.

Notes:

For 260 PSI and 310 PSI trim kits add \$100 to the list price