



**Model B-1 Accelerator**

## VALVES ACCESSORIES

- See Bulletins 250, 251, 320 & 322



## NITROGEN MAINTENANCE DEVICES

- NS-PaK and NS-ASAM
- See Bulletin 254

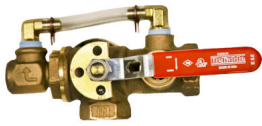
## ACD Dry System Auxiliary Condensate Drain w-Sight Glass

- See Bulletin 441

Description	Part Number	Short Code	List Price
<b>MODEL B1 ACCELERATOR</b>			
B1 Accelerator	6301000300	AE	A\$3,116.55
B2 Accelerator Trim	6516000002	ACT	A\$1,281.53
Replacement Parts Kit - B1	6888000100	B1RPK	A\$1,058.80
<b>DRY VALVE TRIM ACCESSORIES</b>			
Fill Line- Model A (2-1/2")	6501110100	25FLTG	A\$ 405.56
Fill Line- Model D (4 & 6")	6501070100	4FLTG	A\$ 405.56
Priming Chamber	6501080100	PCG	A\$ 708.08
<b>AIR MAINTENANCE DEVICE</b>			
A Owner's Air (factory set 10psi)	6304001110	AMDA10	A\$1,956.36
A Owner's Air (factory set 23psi)	6304001123	AMDA23	A\$1,956.36
B Air Compressor Control Assembly	6304012100	AMDB	A\$2,222.31
<b>PRESSURE ALARM SWITCHES</b>			
EPS10-1 Alarm, Single SPDT (System Sensor)- Set 4-8PSI	6999991339	EPS10-1	A\$ 347.90
EPS10-2 Alarm, Double SPDT (System Sensor)- Set 4-8PSI	6999991212	EPS10-2	A\$ 403.27
EPS40-1 Supervisory, Single SPDT- Adj 10-100PSI	6999991213	EPS40-1	A\$ 347.90
EPS40-2 High/Low Supervisory Double SPDT- Adj 10-100PSI	6999991340	EPS40-2	A\$ 403.27
<b>VALVE SEAT WRENCHES</b>			
2-1/2" & 4" Model D Dry Pipe Valve	6881340000	W4DPV	A\$ 305.83
6" Model D Dry Pipe Valve	6881360000	W6DPV	A\$ 332.43

Description	Part Number	Short Code	List Price
<b>NS-PAK</b>			
NS-PaK Nitrogen Regulator System	6704030021	NSPAK	A\$12,349.70
<b>NS-ASAM</b>			
Nitrogen Maintenance Device with Pressure Switch	6704030022	NSASAM	A\$ 8,233.13
<b>NITROGEN REGULATING DEVICE</b>			
Nitrogen Regulating Device w/ Switch	6304030101		A\$ 2,446.70
Nitrogen Regulating Device w/o Switch	6304030100		A\$ 1,863.28

Description	Part Number	Short Code	List Price
<b>DRY SYSTEM AUXILIARY CONDENSATE DRAIN</b>			
ACD Dry System Auxiliary Condensate Drain w- Sight Glass	6501190000	ACD	A\$1,071.95



### TD TEST AND DRAIN

- See Bulletin 618
- Optional Pressure Relief Kit



### PRESSURE RELIEF TRIM KITS

- See Bulletin 618



### A PRESSURE RELIEF VALVE

- See Bulletin 257



### AAV AUTOMATIC AIR VENT

- **Stainless Steel Construction**
- **175 psi and 300 psi option**
- See Bulletin 620

Description	K-Factor	Part Number	Short Code	List Price
<b>MODEL TD TEST AND DRAIN - THREADED</b>				
RASCO T&D,1",THR,2.8K,300PSI,UL/FM	K2.8 (40)	7M99003865	RTD128	A\$ 532.12
RASCO T&D,1",THR,4.2K,300PSI,UL/FM	K4.2 (60)	7M99003866	RTD142	A\$ 532.12
RASCO T&D,1",THR,5.6K,300PSI,UL/FM	K5.6 (80)	7M99003867	RTD156	A\$ 532.12
RASCO T&D,1.25",THR,2.8K,300PSI,UL/FM	K2.8 (40)	7M99004558	RTD12528	A\$ 706.95
RASCO T&D,1.25",THR,4.2K,300PSI,UL/FM	K4.2 (60)	7M99003868	RTD12542	A\$ 706.95
RASCO T&D,1.25",THR,5.6K,300PSI,UL/FM	K5.6 (80)	7M99003869	RTD12556	A\$ 706.95
RASCO T&D,1.25",THR,8.0K,300PSI,UL/FM	K8.0 (115)	7M99003870	RTD12580	A\$ 706.95
RASCO T&D,1.25",THR,11.2K,300PSI,UL/FM	K11.2 (160)	7M99003871	RTD125112	A\$ 706.95
RASCO T&D,2",THR,2.8K,300PSI,UL/FM	K2.8 (40)	7M99004560	RTD228	A\$1,152.60
RASCO T&D,2",THR,4.2K,300PSI,UL/FM	K4.2 (60)	7M99004510	RTD242	A\$1,152.60
RASCO T&D,2",THR,5.6K,300PSI,UL/FM	K5.6 (80)	7M99003872	RTD256	A\$1,152.60
RASCO T&D,2",THR,8.0K,300PSI,UL/FM	K8 (115)	7M99003873	RTD280	A\$1,152.60
RASCO T&D,2",THR,11.2K,300PSI,UL/FM	K11.2 (160)	7M99003874	RTD2112	A\$1,152.60
RASCO T&D,2",THR,16.8K,300PSI,UL/FM	K16.8 (240)	7M99003875	RTD2168	A\$1,152.60
<b>MODEL TD TEST AND DRAIN - GROOVED X THREADED</b>				
RASCO T&D,1.25",GXT,2.8K,300PSI,UL/FM	K2.8 (40)	7M99004559	RTD12528GT	A\$ 770.37
RASCO T&D,1.25",GXT,4.2K,300PSI,UL/FM	K4.2 (60)	7M99004106	RTD12542GT	A\$ 770.37
RASCO T&D,1.25",GXT,5.6K,300PSI,UL/FM	K5.6 (80)	7M99004107	RTD12556GT	A\$ 770.37
RASCO T&D,1.25",GXT,8.0K,300PSI,UL/FM	K8.0 (115)	7M99004108	RTD12580GT	A\$ 770.37
RASCO T&D,1.25",GXT,11.2K,300PSI,UL/FM	K11.2 (160)	7M99004109	RTD125112GT	A\$ 770.37
RASCO T&D,2",GXT,2.8K,300PSI,UL/FM	K2.8 (40)	7M99004561	RTD228GT	A\$1,256.01
RASCO T&D,2",GXT,4.2K,300PSI,UL/FM	K4.2 (60)	7M99004540	RTD242GT	A\$1,256.01
RASCO T&D,2",GXT,5.6K,300PSI,UL/FM	K5.6 (80)	7M99004110	RTD256GT	A\$1,256.01
RASCO T&D,2",GXT,8.0K,300PSI,UL/FM	K8.0 (115)	7M99004111	RTD280GT	A\$1,256.01
RASCO T&D,2",GXT,11.2K,300PSI,UL/FM	K11.2 (160)	7M99004112	RTD2112GT	A\$1,256.01
RASCO T&D,2",GXT,16.8K,300PSI,UL/FM	K16.8 (240)	7M99004113	RTD2168GT	A\$1,256.01

Description	Part Number	Short Code	List Price
<b>MODEL A PRESSURE RELIEF VALVE - NPT</b>			
MOD A 175 PSI PRESSURE RELIEF VLV 1/2NPT	6501000001	PRV175	A\$ 146.58
A Pressure Relief Valve, 185 psi, 1/2 NPT	6501000002	PRV185	A\$ 146.58
A Pressure Relief Valve, 210 psi, 1/2 NPT	6501000003	PRV210	A\$ 219.86
A Pressure Relief Valve, 260 psi, 1/2 NPT	6501000004	PRV260	A\$ 219.86
A Pressure Relief Valve, 310 psi, 1/2 NPT	6501000005	PRV310	A\$ 219.86
<b>MODEL A PRESSURE RELIEF VALVE - BSPT</b>			
MOD A 175PSI PRESSURE RELIEF VLV 1/2BSPT	6501000006		A\$ 146.58
MOD A PRESSURE RELIEF VLV 185PSI 1/2BSPT	6501000007		A\$ 146.58
MOD A 210PSI PRESSURE RELIEF VLV 1/2BSPT	6501000008		A\$ 219.86
MOD A 260PSI PRESSURE RELIEF VLV 1/2BSPT	6501000009		A\$ 219.86
MOD A 310PSI PRESSURE RELIEF VLV 1/2BSPT	6501000010		A\$ 219.86
<b>MODEL AAV AUTOMATIC AIR VENT</b>			
AAV-S,AUTOMATIC AIR VENT, 175 PSI	6301600000	AAV175	A\$2,663.01
AAV-S,AUTOMATIC AIR VENT, 300 PSI	6301600001	AAV300	A\$5,621.91

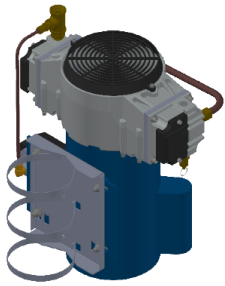
Description	Part Number	Short Code	List Price
<b>PRESSURE RELIEF TRIM KITS</b>			
Pressure Relief Kit - 175 psi	6501203550	PRT175	A\$ 317.77
Pressure Relief Kit - 185 psi	6501203545	PRT185	A\$ 317.77
Pressure Relief Kit - 210 psi	6501213550	PRT210	A\$ 317.77
Pressure Relief Kit - 260 psi	6501203546	PRT260	A\$ 476.66
Pressure Relief Kit - 310 psi	6501203547	PRT310	A\$ 476.66



**QRM RISER &  
 TANK MOUNTED  
 AIR  
 COMPRESSORS**

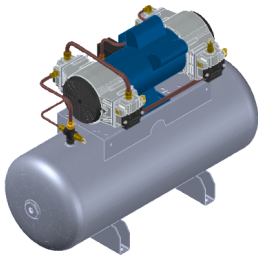
- See Bulletin 256

Description	Part Number	Short Code	List Price
<b>QRM2 AIR COMPRESSORS - TANKLESS w/CHECK VALVE &amp; PRESSURE SWITCH</b>			
RASCO AIR,QRM2-25115 1/4HP,115,TANKLESS	6872000001	14QRM	A\$3,823.66
RASCO AIR,QRM2-25220 1/4HP,220,TANKLESS	6872000002	14QRM220	A\$4,218.89
RASCO AIR,QRM2-50115 1/2HP,115,TANKLESS	6872000005	12QRM	A\$5,282.04
RASCO AIR,QRM2-50220 1/2HP,220,TANKLESS	6872000006	12QRM220	A\$5,510.30
RASCO AIR,QRM2-25220-50HZ,1/4,220,TNKLESS	6872000011	14QRM50	A\$4,218.89
RASCOAIR,QRM2-50220-50HZ,1/2,220,TNKLESS	6872000013	12QRM50	A\$5,510.30
RASCO AIR,QRM2-25115-4050 1/4HP,115,TL	6872000040	14QRM4050	A\$3,892.59
RASCO AIR,QRM2-50115-4050 1/2HP,115,TL	6872000042	12QRM4050	A\$5,282.04
RASCO AIR,QRM2-25220-4050 1/4HP,220,TL	6872000041	14QRM2204050	A\$4,218.89
RASCO AIR,QRM2-50220-4050 1/2HP,220,TL	6872000043	12QRM2204050	A\$5,510.30
<b>QRM2 AIR COMPRESSORS - TANK MOUNTED</b>			
RASCO AIR,QRM2-25115T 1/4HP,115,TANK	6872000003	14QRMT	A\$4,802.55
RASCO AIR,QRM2-25220T 1/4HP,220,TANK	6872000004	14QRM220T	A\$5,234.55
RASCO AIR,QRM2-50115T 1/2HP,115,TANK	6872000007	12QRMT	A\$6,106.21
RASCO AIR,QRM2-50220T 1/2HP,220,TANK	6872000008	12QRM220T	A\$6,366.64
RASCO AIR,QRM2-100115T,1 HP,115,TANK	6872000009	1QRMT	A\$8,079.32
RASCO AIR,QRM2-100220T,1 HP,220,TANK	6872000010	1QRM220T	A\$8,581.78
RASCO AIR,QRM2-25220T-50HZ,1/4,220,TANK	6872000012	14QRM50T	A\$5,234.55
RASCO AIR,QRM2-50220T-50HZ,1/2,220,TANK	6872000014	12QRM50T	A\$6,366.64
RASCO AIR,QRM2-100220T-50HZ,1,220,TANK	6872000015	1QRM50T	A\$8,581.78
<b>CONNECTION KITS</b>			
CONNECTION KIT, TANKLESS COMPRESSOR	650120011G	CKTL	A\$ 752.17
CONNECTION KIT, TANK MOUNTED COMPRESSOR	650120011H	CKTM	A\$1,812.25
<b>FLEX HOSE ONLY</b>			
FLEX HOSE, STAINLESS STEEL, 1/2" x 30"	6872000000	QRMFLEX	A\$ 278.81



## RRM RISER MOUNTED AIR COMPRESSOR

- See Bulletin 258



## RTM TANK MOUNTED AIR COMPRESSOR

- See Bulletin 258

Description	Part Number	Short Code	List Price
<b>RRM AIR COMPRESSORS - RISER MOUNTED</b>			
RASCO AIR,RRM23016-2026,1/6HP,115/220VAC	6872000020	16RRM	A\$ 3,808.34
RASCO AIR,RRM40033-2026,1/3HP,115/220VAC	6872000021	13RRM	A\$ 4,640.17
RASCO AIR,RRM70050-2026,1/2HP,115/220VAC	6872000022	12RRM	A\$ 6,069.45
RASCO AIR,RRM23016-4050 1/6HP,115,CP	6872000044	16RRM4050	A\$ 3,806.81
RASCO AIR,RRM40033-4050 1/3HP,115,CP	6872000045	13RRM4050	A\$ 4,634.04
RASCO AIR,RRM70050-4050 1/2HP,115,CP	6872000046	12RRM4050	A\$ 6,051.06
<b>RTM AIR COMPRESSORS - TANK MOUNTED</b>			
RASCO AIR,RTM25033-80100,1/3HP,115/220VA	6872000023	13RTM	A\$ 7,659.57
RASCO AIR,RTM36575-80100,3/4HP,115/220VA	6872000024	34RTM	A\$ 9,804.25
RASCO AIR,RTM550100-80100,1HP,115/220VAC	6872000025	1RTM	A\$12,255.32
RASCO AIR,RTM915150-80100,1-1/2HP 115/22	6872000026	112RTM	A\$15,625.53
RASCO AIR,RTM1100200-80100 2HP,115/220VA	6872000027	2RTM	A\$18,076.59
<b>CONNECTION KITS</b>			
Connection Kit, Tankless Compressor	650120011G	CKTL	A\$ 752.17
Connection Kit, Tank Mounted Compressor	650120011H	CKTM	A\$ 1,812.25
<b>FLEX HOSE -- SOLD SEPARATELY</b>			
Flex Hose, Stainless Steel, 1/2" x 30"	6872000000	QRMFLEX	A\$ 278.81

### Features

- Three riser mount tank-less options (RRM)
- Five tank mounted options (RTM)
- Quiet oil-less piston compressors
- UL Listed pressure switch
- Flexile connection kits

### Notes:

1. Models 16RRM, 13RRM, and 12RRM are preset at 20 psi start/26 psi stop for use with low pressure systems such as the Model DDX-LP and Model EX.
2. Models 16RRM4050, 13RRM4050, and 12RRM4050 are preset at 40 psi start/50 psi stop for use with conventional differential valves such as the Model FX and Model D.

## AIR COMPRESSORS



Description	Part Number	Short Code	List Price
<b>GAST AIR COMPRESSORS -- BARE</b>			
1/6 HP, 115-60-1, Gast 1LAA-10-M100X	6999990904	16A	A\$ 1,824.58
1/4 HP, 115-60-1, Gast 2LAF-10-M200X	6999991538	14A	A\$ 2,178.10
1/3 HP, 115-60-1, Gast 3LBA-33-M300X	6702000033	13A	A\$ 2,634.27
1/2 HP, 115-60-1, Gast 4LCB-10-M450X	6999991518	12A	A\$ 3,227.28
3/4 HP, 115/230-60-1, Gast 5LCA-23-550NGX	6702000075	34A	A\$ 3,356.53
1 HP, 115/230-60-1, Gast 6LCF-10-M616X	6999991315	1A	A\$ 4,325.95
1-1/2 HP, 115/230-60-1, Gast 7LDE-10-M700X	6702000150	112A	A\$ 7,260.60
2 HP, 115/230-60-1, Gast 8LDF-10-M850X	6999991569	2A	A\$ 8,933.20
<b>GAST AIR COMPRESSORS WITH CHECK VALVE AND PRESSURE SWITCH</b>			
1/6 HP, 115-60-1, Gast 1LAA-32-M100X	6999991173	16PA	A\$ 2,885.16
1/4 HP, 115-60-1, Gast 2LAF-12-M200X	6999990905	14PA	A\$ 3,014.40
1/3 HP, 115-60-1, Gast 3LBA-32-M300X	6999990906	13PA	A\$ 3,333.72
1/2 HP, 115-60-1, Gast 4LCB-21-M450X	6999990907	12PA	A\$ 3,991.43
3/4 HP, 115/230-60-1, Gast 5LCA-22-M550X	6999990908	34PA	A\$ 4,325.95
1 HP, 115/230-60-1, Gast 6LCF-13-M616X	6999990909	1PA	A\$ 5,131.84
1-1/2 HP, 115/230-60-1, Gast 7LDE-16-M750X	6999990910	112PA	A\$ 7,868.82
2 HP, 115/230-60-1, Gast 8LDF-16-M850X	6999991325	2PA	A\$10,149.64
<b>GAST AIR COMPRESSORS -- TANK MOUNTED</b>			
1/6 HP, 115-60-1, Gast 1HAB-11T-M100X, 2 GAL	6999991027	16TA	A\$ 4,219.51
1/4 HP, 115-60-1, Gast 2LAF-11T-M200X, 12 GAL	6999991163	14TA	A\$ 5,846.49
1/3 HP, 115-60-1, Gast 3LBA-11T-M300AX 12 GAL	6999991285	13TA	A\$ 6,606.77
1/2 HP, 115-60-1, Gast 4LCB-11T-M450X, 20 GAL	6999991136	12TA	A\$ 7,260.60
3/4 HP, 115/230-60-1, Gast 5LCA-11T-M550X, 20 GAL	6999991217	34TA	A\$ 7,443.07
1 HP, 115/230-60-1, Gast 6LCF-11T-M616X, 30 GAL	6999991289	1TA	A\$ 9,085.25
1-1/2 HP, 115/230-60-1, Gast 7LDE-11T-M750X, 30 GAL	6999991567	112TA	A\$13,494.83
2 HP, 115/230-60-1, Gast 8LDF-11TC-M850X, 30GAL	6999991541	2TA	A\$18,284.55
<b>GAST AIR COMPRESSORS -- REPAIR KITS *</b>			
3/4 HP, Repair Kit	6888000020	K263	A\$ 600.54
1-1/2 HP, Repair Kit	6888000030	K303	A\$ 965.47
Riser Mounting Brackets #AT670	6999990969	GMB	A\$ 254.62
Riser Mounting Brackets #AT670A	6990007698	GMBL	A\$ 547.32

\*Repair Kit Contains: Gaskets, Piston, Seals, Piston Rings, In/Out Valve Plates, Manifold Seals and Felts (for Filters)



Description	System Capacity	Part Number	Short Code	List Price
<b>C-AIRE HEAVY DUTY - SINGLE PHASE - TANK MOUNTED</b>				
S175-HD1-115 (115V, 1HP, 3 GALLON)	175 gallons	6990012386	C175	A\$ 4,855.81
S265H-HD1-115 (115V, 1-1/2 HP, 3 GALLON)	265 gallons	6990012600	C265	A\$ 4,945.43
S325H-HD1-115 (115V, 1-1/2 HP, 3 GALLON)	325 gallons	6990012601	C325	A\$ 5,072.59
S500H-HD1-115 (115V, 1-1/2 HP, 30 GALLON)	500 gallons	6990012602	C500	A\$ 7,657.53
S750H-HD1-230 (3HP,230V,30 GALLON H)	750 gallons	6990013997	C750	A\$ 8,741.60
S900H-HD1-230 (5HP,230V,30 GALLON H)	900 gallons	6990013998	C900	A\$ 8,939.72
S1300H-HD1-230S (5HP,230V,60 GALLON H)	1300 gallons	6990013999	C1300	A\$15,105.81
S1700H-HD1-230S (7.5HP,230V,60 GALLON H)	1700 gallons	6990014000	C1700	A\$15,973.96
<b>C-AIRE STANDARD DUTY - SINGLE PHASE - TANK MOUNTED</b>				
S300H-SD1-115 (1HP,115V,3 GALLON H)	300 gallons	6990013994	C300	A\$ 4,127.44
S2000H-SD1-230S (7.5HP,230V,60 GALLON H)	2000 gallons			A\$ Call

## VALVE ACCESSORIES

- Additional Sprinkler and Valve Signs available upon request

Description	Part Number	Short Code	List Price
<b>PRESSURE GAUGES</b>			
GAUGE,WATER,0-300,1/4	98248001	WATER	A\$ 142.47
GAUGE,AIR,0-80,1/4NPT	98248000	AIR	A\$ 152.32
GAUGE,AIR,58 OZ,1/4NPT	98248002	AIRO	A\$ 539.55
<b>INSPECTORS TEST CONNECTIONS</b>			
Sight Test Type (Model B)	6851010000	ISC	A\$ 588.41
Blind Test Type (Model A)	6851020000	IBC	A\$ 196.13
<b>AUTOMATIC BALL DRIPS</b>			
1/2,BALL DRIP VALVE,AUTO	78653500	5ABD	A\$ 341.26
3/4,BALL DRIP VALVE,AUTO,MOD C	78653700	75ABD	A\$ 389.95
<b>MECHANICAL BALL DRIPS</b>			
BALL DRIP VALVE 1/2" MECHANICAL MOD. C	78653100	5MBD	A\$ 609.20
1/2,BALL DRIP VALVE,MECH,MOD D	78653800		A\$ 389.95
<b>STRAINER</b>			
3/4" NPT (Female)	78650200	34ST	A\$ 358.02
<b>MISCELLANEOUS</b>			
Model C Sight Drain 2" NPT (Female)	6863000000	2ISC	A\$ 638.26
Model B Drum Drip Only 3/4" NPT (Female)	71010448		A\$ 391.27
Model A Fill Cup 1/2" NPT (Female)	75000050	5FC	A\$ 184.67
Model A Fill Cup 3/4" NPT (Female)	75000075	75FC	A\$ 208.94
Model A Control Valve Seal Only	6869800000		A\$ 51.04
<b>SIGNS—MODEL A</b>			
Valve Control Sign	6892011000	VCS	A\$ 23.54
<b>SIGNS—MODEL B</b>			
Inspector Test Sign	6892110000	ITS	A\$ 4.58
Open Sprinkler Control Sign	6892030000	OSCS	A\$ 4.90
Open Sprinkler Drain Sign	6892040000	OSDS	A\$ 4.90
Test Valve Sign	6892050000	TVS	A\$ 4.90
Water Motor Line Sign	6892060000	WMLS	A\$ 4.90
Auxiliary Drain Sign	6892070000	ADS	A\$ 4.58
Main Drain Sign	6892080000	MDS	A\$ 4.58
Drain Sign	6892090000	DS	A\$ 4.41
Alarm Test Sign	6892100000	ATS	A\$ 4.90
<b>SIGNS—MODEL C</b>			
Cold Weather Sign	6892010000	CWS	A\$ 16.44
<b>SIGNS—MODEL D</b>			
Fire Alarm Sign	6892020000	FAS	A\$ 23.54
<b>SIGNS—MODEL E</b>			
Hydraulically Calculated System	6892120000	HCS	A\$ 12.91

**Notes:**

\*PERSONALIZED PRESSURE GAUGES ARE AVAILABLE UPON REQUEST. PLEASE CONTACT OUR CUSTOMER SERVICE DEPARTMENT FOR MORE INFORMATION.



## RESIDENTIAL RISERS

- GROOVED END
- See Bulletin 425
- WITH POTTER SWITCHES

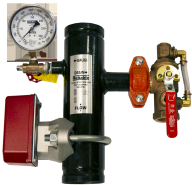
## RESIDENTIAL RISERS

- THREADED MALE NPT 1" (25)
- See Bulletin 425
- WITH POTTER SWITCHES

Description	Size	Part Number	Short Code	List Price
<b>RESIDENTIAL RISER WITH THREAD FEMALE NPT 1" (25) - POTTER</b>				
1" RES RISER ASSEMBLY,POTTER		6A000RP000	1RRNP	A\$1,823.95
1 1/2" RES RISER ASSEMBLY,POTTER		6A030RP000	15RRNP	A\$1,823.95
2" RES RISER ASSEMBLY,POTTER		6A060RP000	2RRNP	A\$2,003.44
<b>RESIDENTIAL RISER WITH THREADED MALE NPT 1"(25)- POTTER</b>				
1" Res Riser Assembly MNPT		6A020RP000		A\$1,849.31
<b>RESIDENTIAL RISER WITH PRESSURE RELIEF VALVE MALE NPT 1" (25)-POTTER</b>				
1" RES RISER ASSBLY MNPT W/PRV 175 PTR R		6A020RP001		A\$2,663.01
1" RES RISER ASSBLY MNPT W/PRV 185 PTR R		6A020RP002		A\$2,663.01
<b>RESIDENTIAL RISER WITH TEST &amp; DRAIN MALE NPT 1" (25) POTTER</b>				
1" RES RISER MNPT W/2.8 TD PTR R MTO		6A020RP010		A\$2,810.95
1" RES RISER MNPT W/4.2 TD PTR R		6A020RP020		A\$2,810.95
1" RES RISER MNPT W/5.6 TD PTR R		6A020RP030		A\$2,810.95
<b>RESIDENTIAL RISER WITH TEST &amp; DRAIN, PRV 175&amp; 185 PSI MALE NPT 1" POTTER</b>				
1" RES RISER MNPT W/2.8 TD PRV 175 PTR R		6A020RP011		A\$3,106.84
1" RES RISER MNPT W/2.8 TD PRV 185 PTR R		6A020RP012		A\$3,106.84
1" RES RISER MNPT W/4.2 TD PRV 175 PTR R		6A020RP021		A\$3,106.84
1" RES RISER MNPT W/4.2 TD PRV 185 PTR R		6A020RP022		A\$3,106.84
1" RES RISER MNPT W/5.6 TD PRV 175 PTR R		6A020RP031		A\$3,106.84
1" RES RISER MNPT W/5.6 TD PRV 185 PTR R		6A020RP032		A\$3,106.84
<b>RESIDENTIAL RISER GROOVED END POTTER</b>				
1 1/2" RES RISER ASSEMBLY GE PTR N		6A050RP000		A\$1,849.31
<b>RESIDENTIAL RISER GROOVED END WITH PRESSURE RELIEF VALVE POTTER</b>				
1 1/2" RES RISER GE PRV 175 PTR R		6A050RP001		A\$2,663.01
1 1/2" RES RISER GE PRV 185 PTR R		6A050RP002		A\$2,663.01
<b>RESIDENTIAL RISER GROOVED END WITH TEST&amp; DRAIN POTTER</b>				
1 1/2" RES RISER ASSY GE W/2.8K TD PTR R		6A050RP010		A\$2,810.95
1 1/2" RES RISER ASSY GE W/4.2K TD PTR R		6A050RP020		A\$2,810.95
1 1/2" RES RISER GE W/5.6K TD PTR		6A050RP030		A\$2,810.95
<b>RESIDENTIAL RISER GE WITH TEST &amp; DRAIN,PRV 175&amp; 185 PSI POTTER</b>				
1 1/2" RES RISER GE W/2.8K TD PRV175 P R		6A050RP011		A\$3,106.84
1 1/2" RES RISER GE W/2.8K TD PRV185 P R		6A050RP012		A\$3,106.84
1 1/2" RESRISER GE W/4.2 TD PRV175 PTR R		6A050RP021		A\$3,106.84
1 1/2" RESRISER GE W/4.2 TD PRV185 PTR R		6A050RP022		A\$3,106.84
1 1/2" RESRISER GE W/5.6 TD PRV175 PTR R		6A050RP031		A\$3,106.84
1 1/2" RESRISER GE W/5.6 TD PRV185 PTR R		6A050RP032		A\$3,106.84

## Model CR Commercial Riser For Commercial Applications

- For Commercial Applications
- See Bulletin 621
- **With Potter Switch**



## Model CR Commercial Riser with Test & Drain

- For Commercial Applications
- See Bulletin 621
- **With Potter Switch**

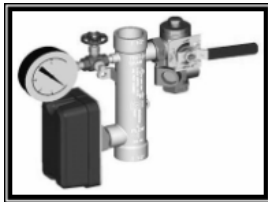
Description	Size	Part Number	Short Code	List Price
<b>MODEL CR COMMERCIAL RISER WITH BASIC TRIM-POTTER SWITCH</b>				
Model CR Commercial Riser - Threaded	1-1/2" (40mm)	6A080CP000	15CRBPE	A\$1,958.11
Model CR Commercial Riser - Threaded	2" (50mm)	6A090CP000	2CRBPE	A\$2,254.00
Model CR Commercial Riser - Grooved	2" (50mm)	6A100CP000	2CRGBPE	A\$1,958.11
Model CR Commercial Riser - Grooved	2-1/2" (65mm)	6A120CP010	25CRGBPE	A\$2,150.25
Model CR Commercial Riser - Grooved	3" (80mm)	6A140CP010	3CRGBPE	A\$2,237.44
Model CR Commercial Riser - Grooved	4" (100mm)	6A160CP020	4CRGBPE	A\$2,656.84
Model CR Commercial Riser - Grooved	6" (150mm)	6A180CP020	6CRGBPE	A\$2,901.41
Model CR Commercial Riser - Grooved	8" (200mm)	6A190CP020	8CRGBPE	A\$3,180.87
<b>MODEL CR COMMERCIAL RISER WITH TEST &amp; DRAIN 2.8K-POTTER SWITCH</b>				
Model CR Commercial Riser w- Test&Drain - Threaded	1-1/2" (40mm)	6A080CP030	15CR28PE	A\$2,241.36
Model CR Commercial Riser w- Test&Drain - Threaded	2" (50mm)	6A090CP030	2CR28PE	A\$2,241.36
Model CR Commercial Riser w- Test&Drain - Grooved	2" (50mm)	6A100CP030	2CRG28PE	A\$2,162.95
<b>MODEL CR COMMERCIAL RISER WITH TEST &amp; DRAIN 4.2K-POTTER SWITCH</b>				
Model CR Commercial Riser w- Test&Drain - Threaded	1-1/2" (40mm)	6A080CP040	15CR42PE	A\$2,241.36
Model CR Commercial Riser w- Test&Drain - Threaded	2" (50mm)	6A090CP040	2CR42PE	A\$2,241.36
Model CR Commercial Riser w- Test&Drain - Grooved	2" (50mm)	6A100CP040	2CRG42PE	A\$2,162.95
Model CR Commercial Riser w- Test&Drain - Grooved	2-1/2" (65mm)	6A120CP060	25CRG42PE	A\$2,476.60
Model CR Commercial Riser w- Test&Drain - Grooved	3" (80mm)	6A140CP060	3CRG42PE	A\$2,476.60
<b>MODEL CR COMMERCIAL RISER WITH TEST &amp; DRAIN 5.6K-POTTER SWITCH</b>				
Model CR Commercial Riser w- Test&Drain - Threaded	1-1/2" (40mm)	6A080CP050	15CR56PE	A\$2,241.36
Model CR Commercial Riser w- Test&Drain - Threaded	2" (50mm)	6A090CP050	2CR56PE	A\$2,241.36
Model CR Commercial Riser w- Test&Drain - Grooved	2" (50mm)	6A100CP050	2CRG56PE	A\$2,162.95
Model CR Commercial Riser w- Test&Drain - Grooved	2-1/2" (65mm)	6A120CP070	25CRG56PE	A\$2,476.60
Model CR Commercial Riser w- Test&Drain - Grooved	3" (80mm)	6A140CP070	3CRG56PE	A\$2,476.60
Model CR Commercial Riser w- Test&Drain - Grooved	4" (100mm)	6A160CP100	4CRG56PE	A\$3,103.88
Model CR Commercial Riser w- Test&Drain - Grooved	6" (150mm)	6A180CP100	6CRG56PE	A\$3,182.29
Model CR Commercial Riser w- Test&Drain - Grooved	8" (200mm)	6A190CP100	8CRG56PE	A\$3,887.99
<b>MODEL CR COMMERCIAL RISER WITH TEST &amp; DRAIN 8.0K-POTTER SWITCH</b>				
Model CR Commercial Riser w- Test&Drain - Grooved	2-1/2" (65mm)	6A120CP080	25CRG80PE	A\$2,476.60
Model CR Commercial Riser w- Test&Drain - Grooved	3" (80mm)	6A140CP080	3CRG80PE	A\$2,476.60
Model CR Commercial Riser w- Test&Drain - Grooved	4" (100mm)	6A160CP110	4CRG80PE	A\$3,103.88
Model CR Commercial Riser w- Test&Drain - Grooved	6" (150mm)	6A180CP110	6CRG80PE	A\$3,182.29
Model CR Commercial Riser w- Test&Drain - Grooved	8" (200mm)	6A190CP110	8CRG80PE	A\$3,887.99
<b>MODEL CR COMMERCIAL RISER WITH TEST &amp; DRAIN 11.2K-POTTER SWITCH</b>				
Model CR Commercial Riser w- Test&Drain - Grooved	2-1/2" (65mm)	6A120CP090	25CRG112PE	A\$2,476.60
Model CR Commercial Riser w- Test&Drain - Grooved	3" (80mm)	6A140CP090	3CRG112PE	A\$2,476.60
Model CR Commercial Riser w- Test&Drain - Grooved	4" (100mm)	6A160CP120	4CRG112PE	A\$3,103.88
Model CR Commercial Riser w- Test&Drain - Grooved	6" (150mm)	6A180CP120	6CRG112PE	A\$3,182.29
Model CR Commercial Riser w- Test&Drain - Grooved	8" (200mm)	6A190CP120	8CRG112PE	A\$3,887.99
<b>MODEL CR COMMERCIAL RISER WITH TEST &amp; DRAIN 16.8K-POTTER SWITCH</b>				
Model CR Commercial Riser w- Test&Drain - Grooved	4" (100mm)	6A160CP130	4CRG168PE	A\$3,103.88
Model CR Commercial Riser w- Test&Drain - Grooved	6" (150mm)	6A180CP130	6CRG168PE	A\$3,182.29
Model CR Commercial Riser w- Test&Drain - Grooved	8" (200mm)	6A190CP130	8CRG168PE	A\$3,887.99
<b>PRESSURE RELIEF KITS</b>				
Pressure Relief Trim - 175 PSI	All Sizes	6501203550	PRT175	A\$ 317.77
Pressure Relief Trim - 185 PSI	All Sizes	6501203545	PRT185	A\$ 317.77
Pressure Relief Trim - 210 PSI	All Sizes	6501213550	PRT210	A\$ 317.77
Pressure Relief Trim - 260 PSI	All Sizes	6501203546	PRT260	A\$ 476.66
Pressure Relief Trim - 310 PSI	All Sizes	6501203547	PRT310	A\$ 476.66





## Model CR Commercial Riser & PRV

- For Commercial Applications
- See Bulletin 621



## Model CR Commercial Riser with Test & Drain & PRV

- For Commercial Applications
- See Bulletin 621
- **Items listed are with the 175 Pressure Relief Valve**

Description	Size	Part Number	Short Code	List Price
<b>MODEL CR COMMERCIAL RISER WITH BASIC TRIM &amp; PRV 175 PSI</b>				
Model CR Commercial Riser - Threaded	1-1/2" (40mm)	6A080CS001	15CRBP	A\$2,147.48
Model CR Commercial Riser - Threaded	2" (50mm)	6A090CS001	2CRBP	A\$2,147.48
Model CR Commercial Riser - Grooved	2" (50mm)	6A100CS001	2CRGBP	A\$2,147.48
Model CR Commercial Riser - Grooved	2-1/2" (65mm)	6A120CS011	25CRGBP	A\$2,339.62
Model CR Commercial Riser - Grooved	3" (80mm)	6A140CS011	3CRGBP	A\$2,426.81
Model CR Commercial Riser - Grooved	4" (100mm)	6A160CS021	4CRGBP	A\$2,846.21
Model CR Commercial Riser - Grooved	6" (150mm)	6A180CS021	6CRGBP	A\$3,090.78
Model CR Commercial Riser - Grooved	8" (200mm)	6A190CS021	8CRGBP	A\$3,370.24
<b>MODEL CR COMMERCIAL RISER WITH TEST &amp; DRAIN &amp; PRV K2.8 175 PSI</b>				
Model CR Commercial Riser w- Test&Drain - Threaded	1-1/2" (40mm)	6A080CS031	15CR28P	A\$2,430.73
Model CR Commercial Riser w- Test&Drain - Threaded	2" (50mm)	6A090CS031	2CR28P	A\$2,430.73
Model CR Commercial Riser w- Test&Drain - Grooved	2" (50mm)	6A100CS031	2CRG28P	A\$2,352.32
<b>MODEL CR COMMERCIAL RISER WITH TEST &amp; DRAIN &amp; PRV K4.2 175 PSI</b>				
Model CR Commercial Riser w- Test&Drain - Threaded	1-1/2" (40mm)	6A080CS041	15CR42P	A\$2,430.73
Model CR Commercial Riser w- Test&Drain - Threaded	2" (50mm)	6A090CS041	2CR42P	A\$2,430.73
Model CR Commercial Riser w- Test&Drain - Grooved	2" (50mm)	6A100CS041	2CRG42P	A\$2,352.32
Model CR Commercial Riser w- Test&Drain - Grooved	2-1/2" (65mm)	6A120CS061	25CRG42P	A\$2,665.97
Model CR Commercial Riser w- Test&Drain - Grooved	3" (80mm)	6A140CS061	3CRG42P	A\$2,665.97
<b>MODEL CR COMMERCIAL RISER WITH TEST &amp; DRAIN &amp; PRV K5.6 175 PSI</b>				
Model CR Commercial Riser w- Test&Drain - Threaded	1-1/2" (40mm)	6A080CS051	15CR56P	A\$2,430.73
Model CR Commercial Riser w- Test&Drain - Threaded	2" (50mm)	6A090CS051	2CR56P	A\$2,430.73
Model CR Commercial Riser w- Test&Drain - Grooved	2" (50mm)	6A100CS051	2CRG56P	A\$2,352.32
Model CR Commercial Riser w- Test&Drain - Grooved	2-1/2" (65mm)	6A120CS071	25CRG56P	A\$2,665.97
Model CR Commercial Riser w- Test&Drain - Grooved	3" (80mm)	6A140CS071	3CRG56P	A\$2,665.97
Model CR Commercial Riser w- Test&Drain - Grooved	4" (100mm)	6A160CS101	4CRG56P	A\$3,574.35
Model CR Commercial Riser w- Test&Drain - Grooved	6" (150mm)	6A180CS101	6CRG56P	A\$3,740.48
Model CR Commercial Riser w- Test&Drain - Grooved	8" (200mm)			A\$ Call
<b>MODEL CR COMMERCIAL RISER WITH TEST &amp; DRAIN &amp; PRV K8.0 175 PSI</b>				
Model CR Commercial Riser w- Test&Drain - Grooved	2-1/2" (65mm)	6A120CS081	25CRG80P	A\$2,665.97
Model CR Commercial Riser w- Test&Drain - Grooved	3" (80mm)	6A140CS081	3CRG80P	A\$2,665.97
Model CR Commercial Riser w- Test&Drain - Grooved	4" (100mm)	6A160CS111	4CRG80P	A\$3,293.25
Model CR Commercial Riser w- Test&Drain - Grooved	6" (150mm)	6A180CS111	6CRG80P	A\$3,371.66
Model CR Commercial Riser w- Test&Drain - Grooved	8" (200mm)	6A190CS111	8CRG80P	A\$4,077.36
<b>MODEL CR COMMERCIAL RISER WITH TEST &amp; DRAIN &amp; PRV K11.2 175 PSI</b>				
Model CR Commercial Riser w- Test&Drain - Grooved	2-1/2" (65mm)	6A120CS091	25CRG112P	A\$2,665.97
Model CR Commercial Riser w- Test&Drain - Grooved	3" (80mm)	6A140CS091	3CRG112P	A\$2,665.97
Model CR Commercial Riser w- Test&Drain - Grooved	4" (100mm)	6A160CS121	4CRG112P	A\$3,293.25
Model CR Commercial Riser w- Test&Drain - Grooved	6" (150mm)	6A180CS121	6CRG112P	A\$3,371.66
Model CR Commercial Riser w- Test&Drain - Grooved	8" (200mm)	6A190CS121	8CRG112P	A\$4,077.36
<b>MODEL CR COMMERCIAL RISER WITH TEST &amp; DRAIN &amp; PRV K16.8 175 PSI</b>				
Model CR Commercial Riser w- Test&Drain - Grooved	4" (100mm)	6A160CS131	4CRG168P	A\$3,293.25
Model CR Commercial Riser w- Test&Drain - Grooved	6" (150mm)	6A180CS131	6CRG168P	A\$3,371.66
Model CR Commercial Riser w- Test&Drain - Grooved	8" (200mm)	6A190CS131	8CRG168P	A\$4,077.36
<b>PRESSURE RELIEF KITS</b>				
Pressure Relief Trim - 175 PSI	All Sizes	6501203550	PRT175	A\$ 317.77
Pressure Relief Trim - 185 PSI	All Sizes	6501203545	PRT185	A\$ 317.77
Pressure Relief Trim - 210 PSI	All Sizes	6501213550	PRT210	A\$ 317.77
Pressure Relief Trim - 260 PSI	All Sizes	6501203546	PRT260	A\$ 476.66
Pressure Relief Trim - 310 PSI	All Sizes	6501203547	PRT310	A\$ 476.66



### Model FCA Floor Control Assembly with Test and Drain

- Potter Switch
- See Bulletin 619
- Grooved Component Connections for Universal Application



### HV Hose Valves

- See Bulletin 444

Description	Size	Part Number	Short Code	List Price
<b>MODEL FCA FLOOR CONTROL ASSEMBLY TEST AND DRAIN K2.8 - POTTER SWITCH</b>				
Model FC Floor Control w- Test&Drain - Grooved	2" (50mm)	6B2000P011	2FC28P	A\$4,438.35
<b>MODEL FCA FLOOR CONTROL ASSEMBLY WITH TEST &amp; DRAIN K4.2 - POTTER SWITCH</b>				
Model FC Floor Control w- Test&Drain - Grooved	2" (50mm)	6B2000P021	2FC42P	A\$4,438.35
Model FC Floor Control w- Test&Drain - Grooved	2 1/2" (66MM)	6B2500P041	25FC42P	A\$4,290.40
Model FC Floor Control w- Test&Drain - Grooved	3" (80mm)	6B3000P041	3FC42P	A\$5,030.13
<b>MODEL FCA FLOOR CONTROL ASSEMBLY WITH TEST AND DRAIN K5.6 - POTTER SWITCH</b>				
Model FC Floor Control w- Test&Drain - Grooved	2" (50mm)	6B2000P031	2FC56P	A\$4,438.35
Model FC Floor Control w- Test&Drain - Grooved	2 1/2"	6B2500P051	25FC56P	A\$4,290.40
Model FC Floor Control w- Test&Drain - Grooved	3"	6B3000P051	3FC56P	A\$5,030.13
Model FC Floor Control w- Test&Drain - Grooved	4"	6B4000P081	4FC56P	A\$5,030.13
<b>MODEL FCA FLOOR CONTROL ASSEMBLY WITH TEST AND DRAIN K8.0 - POTTER SWITCH</b>				
Model FC Floor Control w- Test&Drain - Grooved	2-1/2" (65mm)	6B2500P061	25FC80P	A\$4,290.40
Model FC Floor Control w- Test&Drain - Grooved	3" (80mm)	6B3000P061	3FC80P	A\$5,030.13
Model FC Floor Control w- Test&Drain - Grooved	4" (100mm)	6B4000P091	4FC80P	A\$5,030.13
<b>MODEL FCA FLOOR CONTROL ASSEMBLY WITH TEST AND DRAIN K11.2 - POTTER SWITCH</b>				
Model FC Floor Control w- Test&Drain - Grooved	2-1/2" (65mm)	6B2500P071	25FC112P	A\$4,290.40
Model FC Floor Control w- Test&Drain - Grooved	3" (80mm)	6B3000P071	3FC112P	A\$5,030.13
Model FC Floor Control w- Test&Drain - Grooved	4" (100mm)	6B4000P101	4FC112P	A\$5,030.13
<b>MODEL FCA FLOOR CONTROL ASSEMBLY WITH TEST AND DRAIN K16.8 - POTTER SWITCH</b>				
Model FC Floor Control w- Test&Drain - Grooved	4" (100mm)	6B4000P111	4FC168P	A\$5,030.13
<b>STREAMLINE DRAIN HOSES</b>				
RASCOFLEX,#RFDH12524TU,1.25"X2',MNPTXUN		7M99004448		A\$ 350.94
RASCOFLEX,#RFDH12548TU,1.25"X4',MNPTXUN		7M99004449		A\$ 442.57
RASCOFLEX,#RFDH248TG,2"X48",MNPTXGRV		7M99004450		A\$ 502.99
RASCOFLEX,#RFDH124TU,1"X2',MNPTXUNION		7M99004675		A\$ 322.36
RASCOFLEX,#RFDH12536TU,1.25"X3',MNPTXUN		7M99004676		A\$ 416.56
<b>MODEL HV HOSE VALVES</b>				
RASCO,#REL-HVT,1.5",FXM,HOSE VALVE	1 1/2"	7M99004574	15RAHV	A\$ 618.31
RASCO,#REL-HVT,2.5",FXM,HOSE VALVE	2 1/2"	7M99004576	25RAHV	A\$ 988.11
RASCO,#REL-HVG,2.5",GXM,HOSE VALVE	2 1/2"	7M99004578	25RAHVG	A\$1,058.53
<b>MODEL HV HOSE VALVES ACCESSORIES</b>				
RASCO,#REL-CC15,1.5",CAP+CHAIN,BRASS	1 1/2"	7M99004621	15RHVC	A\$ 117.88
RASCO,#REL-CC25,2.5",CAP+CHAIN,BRASS	2 1/2"	7M99004620	25RHVC	A\$ 148.23

**Notes:**

175 PSI Relief Valve Kit is provided and installed as standard equipment. Higher pressure relief valves (185, 210, 260 & 300 PSI) are available upon request.

**Notes:**

For 260 PSI and 310 PSI trim kits add \$100 to the list price