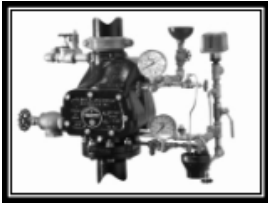


Model A



Model D

### DRY PIPE VALVES

- See Bulletins 350, 351, 352, 353

| Description                                | Part Number | Short Code | List Price   |
|--|-------------|------------|--------------|
| <b>MODEL A THREADED OR GROOVED</b>         |             |            |              |
| Model A - 2-1/2" — Threaded                | 6101020000  | 25D        | \$ 4,476.39  |
| Model A - 2-1/2" — Grooved                 | 6101020015  | 25DG       | \$ 4,476.39  |
| <b>MODEL A METRIC</b>                      |             |            |              |
| Model A - 65mm                             | 6101020020  | 65MMD      | \$ 4,476.39  |
| <b>MODEL D FLANGED OR GROOVED</b>          |             |            |              |
| 4" — Flanged                               | 6101040500  | 4D         | \$ 5,270.95  |
| 4" — Grooved                               | 6101040515  | 4DG        | \$ 5,270.95  |
| 6" — Flanged                               | 6101060500  | 6D         | \$ 6,696.56  |
| 6" — Grooved                               | 6101060515  | 6DG        | \$ 6,696.56  |
| <b>MODEL D METRIC</b>                      |             |            |              |
| Model D — 100mm                            | 6101040520  | 100MMD     | \$ 5,270.95  |
| Model D — 150mm                            | 6101060520  | 150MMD     | \$ 6,696.56  |
| <b>TRIM (ONLY) — INDIVIDUAL PARTS</b>      |             |            |              |
| 2-1/2"                                     | 6501090100  | 25BDRYG    | \$ 2,180.50  |
| 4"   | 6501050100  | 4BDRYG     | \$ 2,180.50  |
| 6"   | 6501050100  | 4BDRYG     | \$ 2,180.50  |
| <b>TRIM (ONLY) — SEGMENTALLY ASSEMBLED</b> |             |            |              |
| 2-1/2"                                     | 6501101010  | 25BDRYPG   | \$ 2,533.90  |
| 4"   | 6501210100  | 4BDRYPG    | \$ 2,533.90  |
| 6"   | 6501210100  | 4BDRYPG    | \$ 2,533.90  |
| <b>FACTORY TRIMMED VALVES<sup>1</sup></b>  |             |            |              |
| 4" — Flanged                               | 6505040110  | 4DFTG      | \$ 8,106.56  |
| 4" — Grooved                               | 6505040111  | 4DGFTG     | \$ 8,106.56  |
| 4" w/ Accelerator — Flanged                | 6505040113  | 4DFTAG     | \$ 11,114.06 |
| 4" w/ Accelerator — Grooved                | 6505040000  | 4DGFTAG    | \$ 11,114.06 |
| 6" — Flanged                               | 6505060110  | 6DFTG      | \$ 9,628.34  |
| 6" — Grooved                               | 6505060111  | 6DGFTG     | \$ 9,628.34  |
| 6" w/ Accelerator — Flanged                | 6505060113  | 6DFTAG     | \$ 12,566.12 |
| 6" w/ Accelerator — Grooved                | 6505060000  | 6DGFTAG    | \$ 12,566.12 |

<sup>1</sup> Factory Trimmed Valve Includes Valve and Trim



## MODEL FX DRY PIPE VALVE

- Convenient external reset; no priming water required
- See Bulletin 360
- Fully assembled valves include the Potter pressure switches
- Loose and segmented trim do not include the Potter pressure switches

| Description   | Part Number | Short Code | List Price  |
|---|-------------|------------|-------------|
| <b>MODEL FX DRY PIPE VALVE - GROOVED/GROOVED - VALVE ONLY</b> |             |            |             |
| 2(50MM),FX DRY VALVE,GE/GE,RED                                | 6101020607  | 2FX        | \$ 3,564.00 |
| 2 1/2(65MM),FX DRY VALVE,GE/GE,RED                            | 6101025607  | 25FX       | \$ 4,320.00 |
| 76MM,FX DRY VALVE,GE/GE,RED                                   | 6101076607  | 76MMFX     | \$ 4,320.00 |
| 3(80MM),FX DRY VALVE,GE/GE,RED                                | 6101030607  | 3FX        | \$ 4,320.00 |
| 4(100MM),FX DRY VALVE,GE/GE,RED                               | 6101040607  | 4FX        | \$ 4,644.00 |
| 6(150MM),FX DRY VALVE,GE/GE,RED                               | 6101060607  | 6FX        | \$ 6,480.00 |
| 165MM,FX DRY VALVE,GE/GE,RED                                  | 6101065607  | 165MMFX    | \$ 6,480.00 |
| <b>MODEL FX DRY PIPE VALVE - FLANGE/GROOVED - VALVE ONLY</b>  |             |            |             |
| 4(100MM),FX DRY VALVE,FL/GE,RED                               | 6101040608  | 4FXFG      | \$ 4,644.00 |
| 4(100MM),FX DRY VALVE,FL/GE,BS-E,RED                          | 6101040609  | 4FXFGBS    | \$ 4,644.00 |
| 4(100MM),FX DRY VALVE,FL/GE,PN16,RED                          | 610104060A  | 4FXFGPN16  | \$ 4,644.00 |
| 6(150MM),FX DRY VALVE,FL/GE,RED                               | 6101060608  | 6FXFG      | \$ 6,480.00 |
| 6(150MM),FX DRY VALVE,FL/GE,BS-E,RED                          | 6101060609  | 6FXFGBS    | \$ 6,480.00 |
| 6(150MM),FX DRY VALVE,FL/GE,PN16,RED                          | 610106060A  | 6FXFGPN16  | \$ 6,480.00 |
| <b>MODEL FX DRY PIPE VALVE - FLANGE/FLANGE - VALVE ONLY</b>   |             |            |             |
| 4(100MM),FX DRY VALVE,FL/FL,RED                               | 610104060B  | 4FXF       | \$ 4,644.00 |
| 4(100MM),FX DRY VALVE,FL/FL,BS-E,RED                          | 610104060C  | 4FXFBS     | \$ 4,644.00 |
| 4(100MM),FX DRY VALVE,FL/FL,PN16,RED                          | 610104060E  | 4FXFPN16   | \$ 4,644.00 |
| 6(150MM),FX DRY VALVE,FL/FL,RED                               | 610106060B  | 6FXF       | \$ 6,480.00 |
| 6(150MM),FX DRY VALVE,FL/FL,BS-E,RED                          | 610106060C  | 6FXFBS     | \$ 6,480.00 |
| 6(150MM),FX DRY VALVE,FL/FL,PN16,RED                          | 610106060E  | 6FXFPN16   | \$ 6,480.00 |
| <b>MODEL FX TRIM ONLY - INDIVIDUAL PARTS (LOOSE)</b>          |             |            |             |
| 2 BASIC DRY TRIM,FX,LOOSE                                     | 6508000001  | 2FXDRYL    | \$ 1,080.00 |
| 2 1/2 & 3 BASIC DRY TRIM,FX,LOOSE                             | 6508000002  | 25FXDRYL   | \$ 1,080.00 |
| 4 & 6 BASIC DRY TRIM,FX,LOOSE                                 | 6508000003  | 4FXDRYL    | \$ 1,404.00 |
| <b>MODEL FX TRIM ONLY - SEGMENTALLY ASSEMBLED</b>             |             |            |             |
| 2 BASIC DRY TRIM,FX,SEGMENTED                                 | 6508000011  | 2FXDRYP    | \$ 1,512.00 |
| 2 1/2 & 3 BASIC DRY TRIM,FX,SEGMENTED                         | 6508000012  | 25FXDRYP   | \$ 1,512.00 |
| 4 & 6 BASIC DRY TRIM,FX,SEGMENTED                             | 6508000013  | 4FXDRYP    | \$ 1,620.00 |
| <b>MODEL FX ACCELERATOR AND TRIM</b>                          |             |            |             |
| FX ACCELERATOR AND TRIM KIT LOOSE                             | 650120001A  | AEFX       | \$ 2,484.00 |

## Features

- Lightweight ductile iron body with compact trim
- External reset reduces setup and commissioning time
- Does not require priming water
- Available fully assembled, with or without control valve



## MODEL FX DRY PIPE VALVE

- Convenient external reset; no priming water required
- See Bulletin 360
- Fully assembled valves include the Potter pressure switches
- Loose and segmented trim do not include the Potter pressure switches

| Description   | Part Number | Short Code | List Price |
|---|-------------|------------|------------|
| <b>MODEL FX FULLY ASSEMBLED VALVE - GROOVED/GROOVED WITH BASIC TRIM</b> |             |            |            |
| 2(50MM),FX DRY VALVE,GE/GE,RED  | 6508027000  | 2FXFB      | \$6,156.00 |
| 2 1/2(65MM),FX DRY VALVE,GE/GE,RED                                      | 6508017000  | 25FXFB     | \$6,696.00 |
| 76MM,FX DRY VALVE,GE/GE,RED   | 6508077000  | 76MMFXFB   | \$6,696.00 |
| 3(80MM),FX DRY VALVE,GE/GE,RED  | 6508037000  | 3FXFB      | \$6,696.00 |
| 4(100MM),FX DRY VALVE,GE/GE,RED   | 6508047000  | 4FXFB      | \$7,020.00 |
| 6(150MM),FX DRY VALVE,GE/GE,RED   | 6508067000  | 6FXFB      | \$7,776.00 |
| 165MM,FX DRY VALVE,GE/GE,RED  | 6508057000  | 165MMFXFB  | \$7,776.00 |
| <b>MODEL FX FULLY ASSEMBLED VALVE - FLANGE/GROOVED WITH BASIC TRIM</b>  |             |            |            |
| 4(100MM),FX DRY VALVE,FL/GE,PN16,RED                                    | 650804A000  | 4FXPN16GFB | \$7,020.00 |
| 4(100MM),FX DRY VALVE,FL/GE,RED   | 6508048000  | 4FXFGFB    | \$7,020.00 |
| 6(150MM),FX DRY VALVE,FL/GE,PN16,RED                                    | 650806A000  | 6FXPN16GFB | \$7,776.00 |
| 6(150MM),FX DRY VALVE,FL/GE,RED   | 6508068000  | 6FXFGFB    | \$7,776.00 |
| <b>MODEL FX FULLY ASSEMBLED VALVE - FLANGE/FLANGE WITH BASIC TRIM</b>   |             |            |            |
| 4(100MM),FX DRY VALVE,FL/FL,PN16,RED                                    | 650804E000  | 4FXPN16FFB | \$7,020.00 |
| 4(100MM),FX DRY VALVE,FL/FL,RED   | 650804B000  | 4FXFFB     | \$7,020.00 |
| 6(150MM),FX DRY VALVE,FL/FL,PN16,RED                                    | 650806E000  | 6FXPN16FFB | \$7,776.00 |
| 6(150MM),FX DRY VALVE,FL/FL,RED   | 650806B000  | 6FXFFB     | \$7,776.00 |
| <b>MODEL FX FULLY ASSEMBLED VALVE - GROOVED/GROOVED W/CONTROL VALVE</b> |             |            |            |
| 2(50MM),FX DRY VALVE,GE/GE,RED  | 6508027100  | 2FXFBV     | \$7,128.00 |
| 2 1/2(65MM),FX DRY VALVE,GE/GE,RED                                      | 6508017100  | 25FXFBV    | \$7,128.00 |
| 76MM,FX DRY VALVE,GE/GE,RED   | 6508077100  | 76MMFXFBV  | \$7,128.00 |
| 3(80MM),FX DRY VALVE,GE/GE,RED  | 6508037100  | 3FXFBV     | \$7,128.00 |
| 4(100MM),FX DRY VALVE,GE/GE,RED   | 6508047100  | 4FXFBV     | \$7,560.00 |
| 6(150MM),FX DRY VALVE,GE/GE,RED   | 6508067100  | 6FXFBV     | \$8,640.00 |
| 165MM,FX DRY VALVE,GE/GE,RED  | 6508057100  | 165MMFXFBV | \$8,640.00 |

## Features

- Lightweight ductile iron body with compact trim
- External reset reduces setup and commissioning time
- Does not require priming water
- Available fully assembled, with or without control valve